

## What happens after the course?

Having successfully completed the course the police will advise you that no further action will be taken. Once you have attended a course you will not be permitted to attend another until 3 years have passed.

By acceptance of a RIDE course you will be entering into a contract with Essex County Council for provision of the course and not the Police. You will also be agreeing to abide by the terms and conditions as specified by Essex County Council. The Terms and Conditions and further information on RIDE can be found by visiting [www.essex.gov.uk/ride](http://www.essex.gov.uk/ride) or by writing to The DIS Course Administrator, Freepost CL289, County Hall, Chelmsford CM1 1QH

By acceptance of a RIDE course you will be entering into a contract with Essex County Council for provision of the course and not the Police. You will also be agreeing to abide by the terms and conditions as specified by Essex County Council. The Terms and Conditions and further information on RIDE can be found by visiting [www.essex.gov.uk/ride](http://www.essex.gov.uk/ride) or by writing to The DIS Course Administrator, Freepost CL289, County Hall, Chelmsford CM1 1QH



Don't stop here – you can enrol for a BikeSafe Workshop or seek further rider training through the BikeSafe Essex homepage links [www.essex.police.uk/bikesafe](http://www.essex.police.uk/bikesafe)

EssexWorks.

For a better quality of life

### This booklet is issued by

Essex County Council

Environment, Sustainability and Highways

You can contact us in the following ways:

#### By post:

DIS Course Administration  
Freepost CL289  
County Hall, Chelmsford  
Essex CM1 1QH

#### By telephone:

01245 437347

#### By fax:

01245 490705

#### By email:

[driver.improvement@essex.gov.uk](mailto:driver.improvement@essex.gov.uk)

#### Visit our website:

[www.essex.gov.uk/ride](http://www.essex.gov.uk/ride)

The information contained in this booklet can be translated, and/or made available in alternative formats, on request

Published November 2008



INVESTOR IN PEOPLE

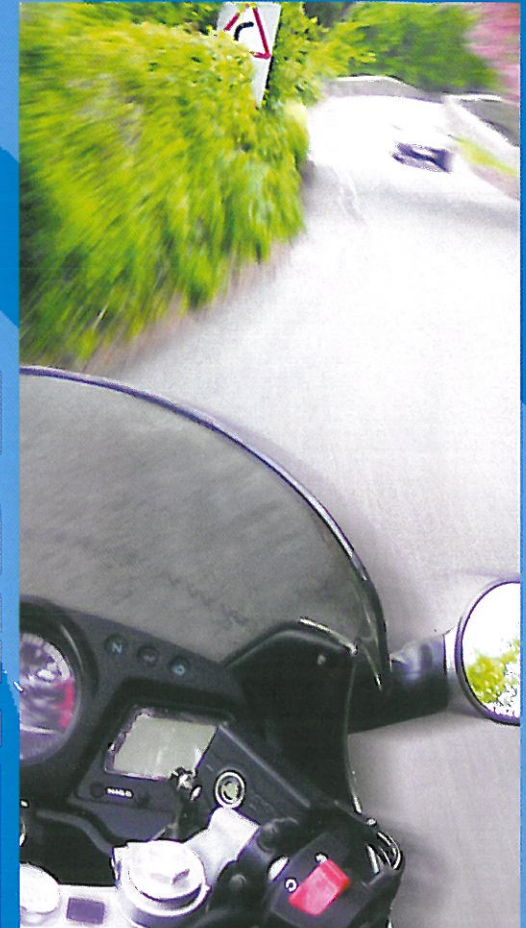


printed on 75% recycled paper

EssexWorks.

For a better quality of life

RIDE



National Driver  
Improvement Scheme

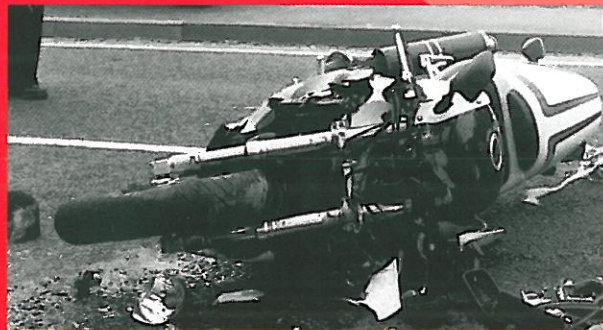
E013700



Essex County Council

The Government's road safety target for casualty reduction is generally being met, but motorcycle casualties are still unacceptably high.

In 2007, 26 motor cycle riders were killed and 236 were seriously injured in Essex.



To curb this trend, an intervention with emphasis on attitude and behaviour realignment has been introduced in Essex.

Riders who would normally receive points and a fine for inappropriate riding may now be referred to the innovative new **RIDE** course, which stands for 'Rider Intervention and Developing Experience'.

### Why is the course offered?

The law treats drivers and riders the same, but fails to recognize that there are fundamental differences between these two groups of road user.

The **RIDE** Course is delivered as an aspect of the National Driver Improvement Scheme and offers an alternative to prosecution under Section 3 of the Road Traffic Act 1988, for offences charged under "riding without due

care and attention" and/or "riding without reasonable consideration". Riders suspected of any action endangering or causing inconvenience to other road users are also included.

### The aim of the course

To increase awareness of current riding behaviour and provide a method to create a positive and responsible approach to motorcycling in order to prevent further unnecessary deaths and injury to motorcyclists on our roads.

### Implementation

The intervention consists of a one day theory session and a half day (3 hrs) practical element which serves to reinforce the delivered theory, especially in riders with limited experience and /or low skill levels.

The course has been developed, researched and tested by professionals. The theory session incorporates riders' perceptions of other road users, hazard perception and awareness, as well as cognitive testing.



### The course supplier

The course is provided by Essex County Council Road Safety in partnership with Essex Police and delivered by approved and experienced civilian motorcycle instructors.

### Is it a test? Can I fail?

There is no test, but satisfactory completion of the course is essential. This means attending and taking a full and active part in all sessions on both days. However, if at any time during the practical aspect of the course it is considered by the instructor that your riding is in any way dangerous, then the practical session will be terminated and you will be returned to the centre and rejected from the course.

### How much does it cost?

The current cost of attending the course, which must be paid for at the time of booking, is set out in the letter accompanying this leaflet.

### Where is the course held?

Your course will be held in Essex, normally at Colchester. As it is a national scheme you can take a course in any of the participating areas throughout the United Kingdom. However, not all offer the dedicated **RIDE** course but do provide courses based on the National Driver Improvement Scheme. Details of other Service Providers can be found at [www.driver-improvement.co.uk](http://www.driver-improvement.co.uk)