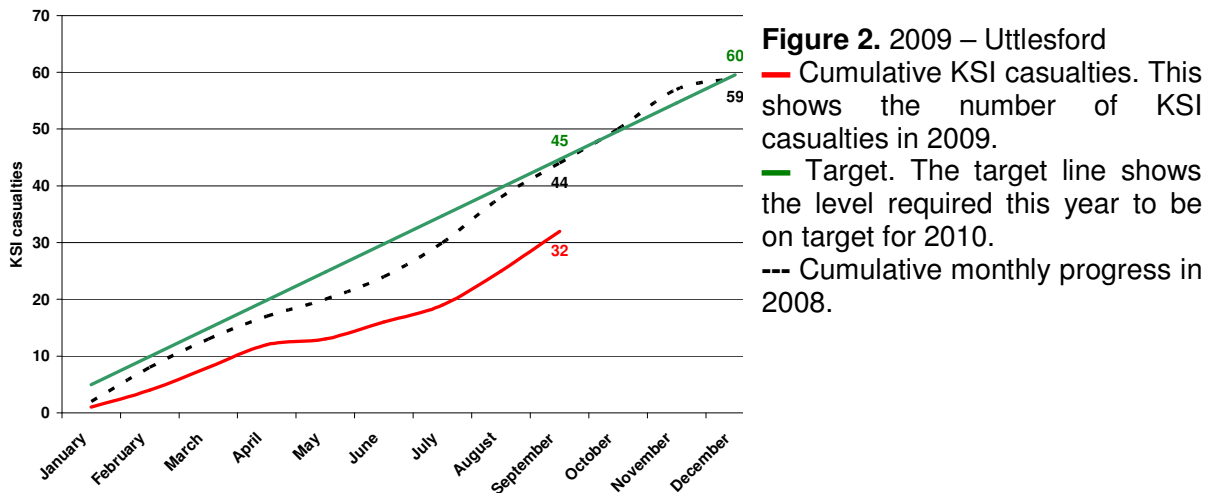
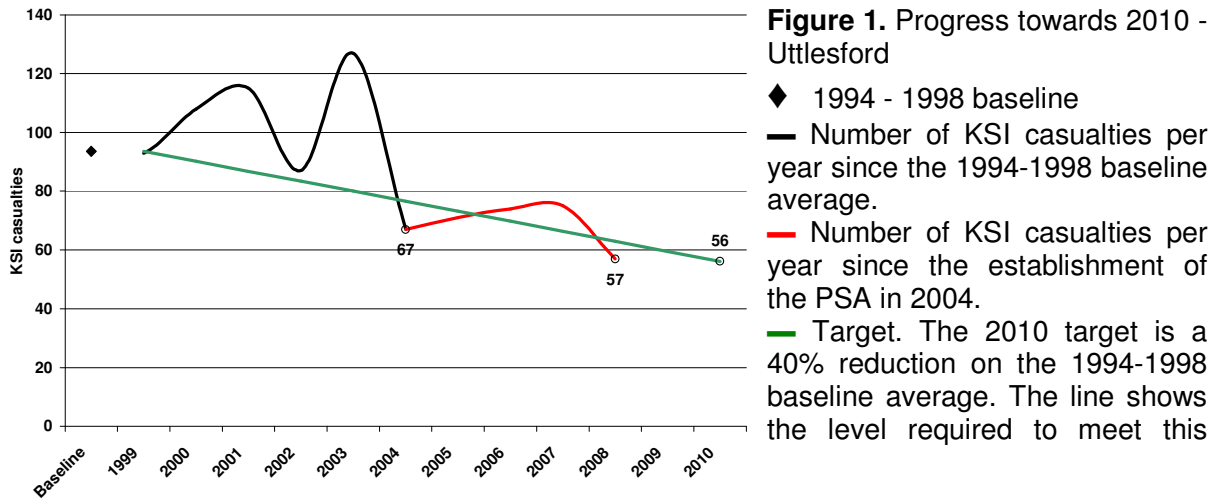


Uttlesford District KSI data to end of 3rd quarter 2009 (Provisional)

Total KSI casualties in Uttlesford



Historically, the number of KSI casualties in Uttlesford has been above target since the baseline period. In 2008, however, there were 57 KSI casualties, 18 fewer than in 2007 and now 6 KSI casualties below the target line (figure 1). After the 3rd quarter of 2009 there have been 32 KSI casualties, 12 fewer than at the same stage of last year and 13 less than the target for this period (figure 2).

Total CHILD KSI casualties in Uttlesford

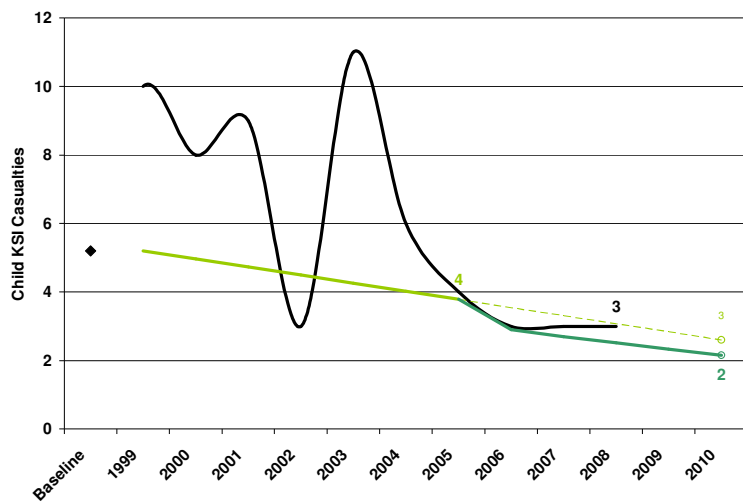


Figure 3. Progress towards 2010 - Uttlesford

◆ 1994 - 1998 baseline average.
 — Number of Child KSI casualties per year since the 1994-1998 baseline average.
 — 2010 Target. The 2010 target is a 50% reduction on the 1994-1998 baseline average. The line shows the level required to meet this target.
 — LTP2 Target. The LTP2 target was adjusted in 2005 to further reduce the DfT target.

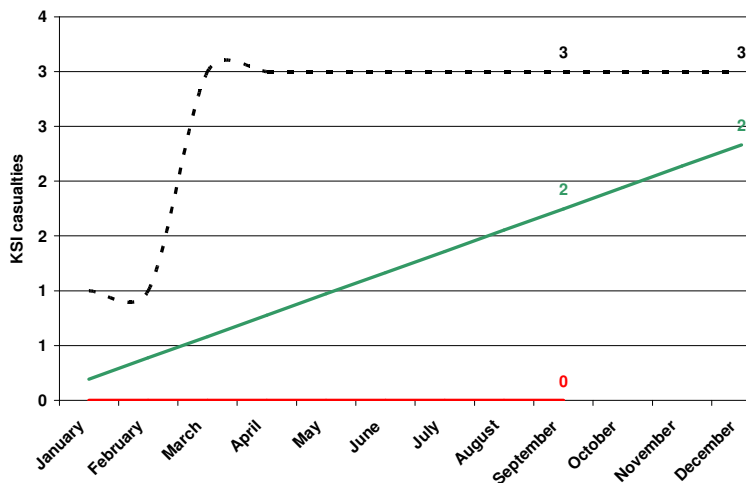


Figure 4. 2009 – Uttlesford
 — Cumulative Child KSI casualties. This shows the number of KSI casualties in 2009.
 — LTP2 Target. The target line shows the level required this year to be on target for 2010.
 --- Cumulative monthly progress in 2008.

Historically, the number of Child KSI casualties in Uttlesford has mostly been above the target line and adjusted target line. In 2008 there were 3 KSI casualties, equal to 2007 and equal to the end of year target line (figure 3). After the 3rd quarter of 2009 there have been 0 Child KSI casualties, 3 fewer than at the same stage of last year and 2 less than the target for this period (figure 4).

Comparison with other districts

Table 1. KSI casualties by District 2008

	KSI casualties - 2008						KSI per 100000 population
	Population	All	Drink Drive	Motorcycles	Speed - Related	Young Drivers	
Basildon	168600	63	4	19	8	12	37.37
Braintree	139700	66	5	15	13	18	47.24
Brentwood	70900	39	0	7	4	12	55.01
Castle Point	88600	41	2	8	3	11	46.28
Chelmsford	162800	76	5	24	10	16	46.68
Colchester	170800	94	4	30	19	20	55.04
Epping	122900	113	7	27	22	21	91.94
Harlow	78100	16	1	4	1	3	20.49
Maldon	61700	37	4	7	6	9	59.97
Rochford	81100	22	4	6	3	7	27.13
Tendring	144600	80	6	19	7	13	55.33
Uttlesford	71400	59	2	12	14	13	82.63
New Essex	1361200	706	44	178	110	155	51.87

Source: 2006 mid-year population estimates, ONS Crown Copyright Reserved [from Nomis on 23 June 2008]

Table 2. KSI casualties by District 2009

	KSI casualties - 2009 (to end Q3 ONLY)						KSI per 100000 population
	Population	All	Drink Drive	Motorcycles	Speeding	Young Drivers	
Basildon	169,800	34	1	10	3	5	20.02
Braintree	140,900	56	2	24	4	7	39.74
Brentwood	71,600	38	2	13	1	8	53.07
Castle Point	89,200	18	0	8	2	0	20.18
Chelmsford	164,500	55	6	15	4	13	33.43
Colchester	175,500	60	5	14	13	13	34.19
Epping	123,300	60	2	19	10	12	48.66
Harlow	78,300	13	0	9	2	0	16.60
Maldon	62,400	20	3	6	3	5	32.05
Rochford	82,200	30	0	14	4	7	36.50
Tendring	146,200	60	6	18	5	16	41.04
Uttlesford	72,500	32	2	6	5	4	44.14
New Essex	1376400	476	29	156	56	90	34.58

Source: 2007 mid-year population estimates, ONS Crown Copyright Reserved [downloaded 24 July 2009]

Uttlesford was ranked 7th by number of KSI casualties in 2008 and 2nd by KSI casualties per 100000 population (table 1). After the 2nd quarter of 2009, Uttlesford was ranked 8th by number of KSI casualties and 3rd by KSI casualties per 100000 population (table 2).

Target groups

Young Drivers

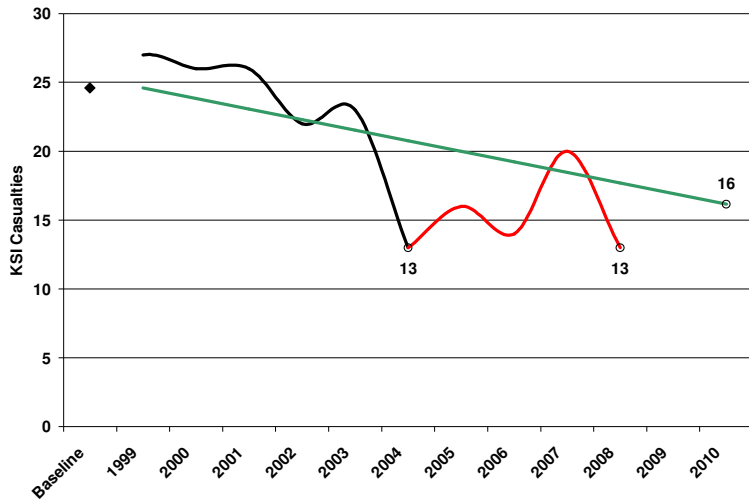


Figure 5. Progress towards 2010 – Uttlesford – Young Drivers

- ◆ 1994 - 1998 baseline
- Number of KSI casualties per year since the 1994-1998 baseline average.
- Number of KSI casualties per year since the establishment of the PSA in 2004.
- Target. The 2010 target is a 40% reduction on the 1994-1998 baseline average. The line shows the level required to meet this

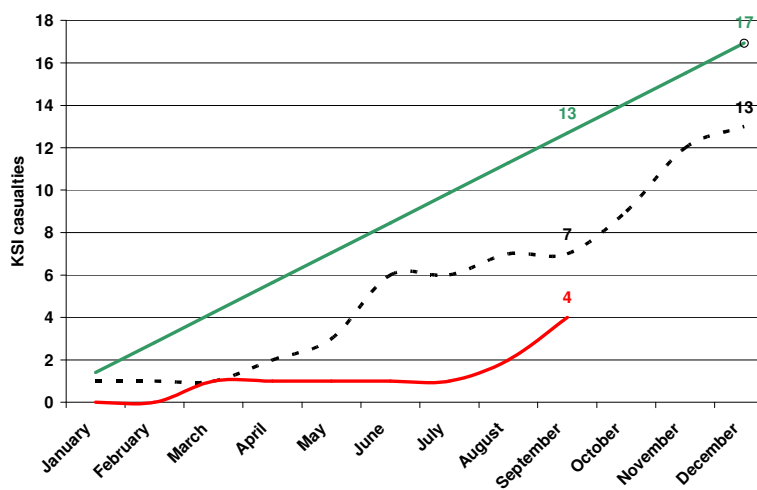


Figure 6. 2009 – Uttlesford – Young Drivers

- Cumulative KSI casualties. This shows the number of KSI casualties in 2009.
- Target. The target line shows the level required this year to be on target for 2010.
- Cumulative monthly progress in 2008.

Young driver KSI casualties in Uttlesford had been below target but increasing in recent years. In 2008, however, there were 13 KSI casualties, 7 fewer than in 2007 and 5 KSI casualties under the target line (figure 5). After the 3rd quarter of 2009 there have been 4 young driver KSI casualties, 3 less than at the same stage of last year and 9 fewer than the target for this period (figure 6).

Speed-related

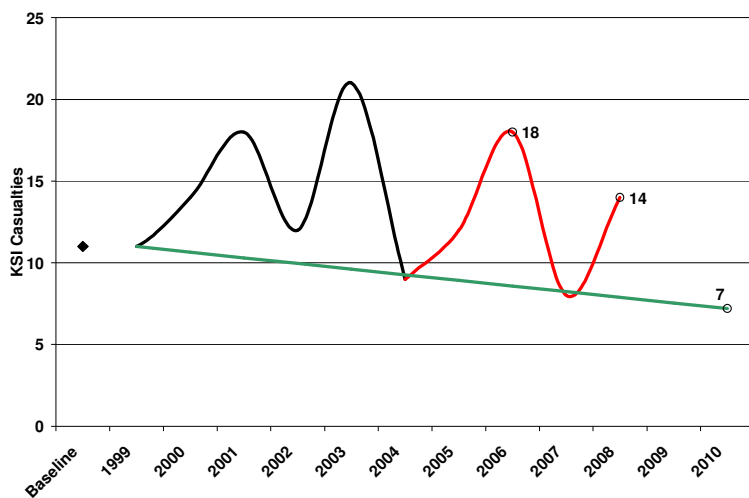


Figure 7. Progress towards 2010 Uttlesford – Speed-related

- ◆ 1994 - 1998 baseline
- Number of KSI casualties per year since the 1994-1998 baseline average.
- Number of KSI casualties per year since the establishment of the PSA in 2004.
- Target. The 2010 target is a 40% reduction on the 1994-1998 baseline average. The line shows the level required to meet this

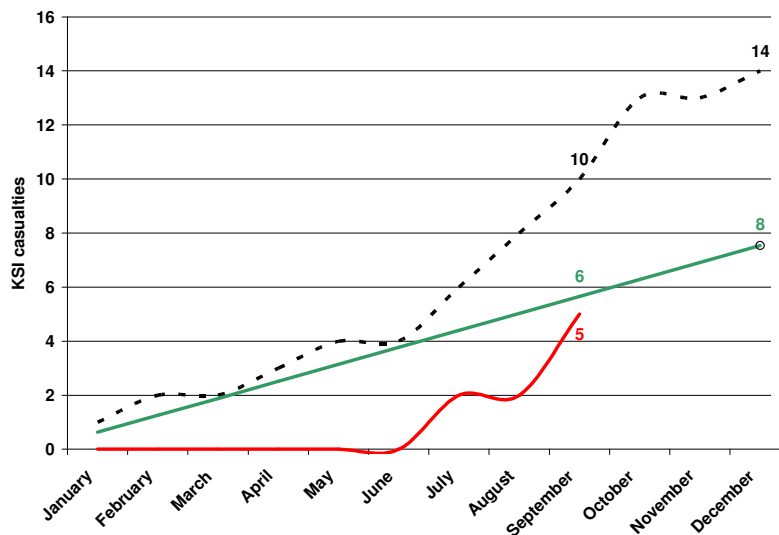


Figure 8. 2009 – Uttlesford – Speed-related

- Cumulative KSI casualties. This shows the number of KSI casualties in 2009.
- Target. The target line shows the level required this year to be on target for 2010.
- Cumulative monthly progress in 2008.

Speed related KSI casualties in Uttlesford have not been below target since the baseline. In 2008 there were 14 KSI casualties, 6 more than in 2007 and 6 above the end of year target line (figure 7). After the 3rd quarter of 2009 there have been 5 speed related KSI casualties, 1 fewer than at the same stage of last year and 5 less than the target for this period (figure 8).

Motorcyclists

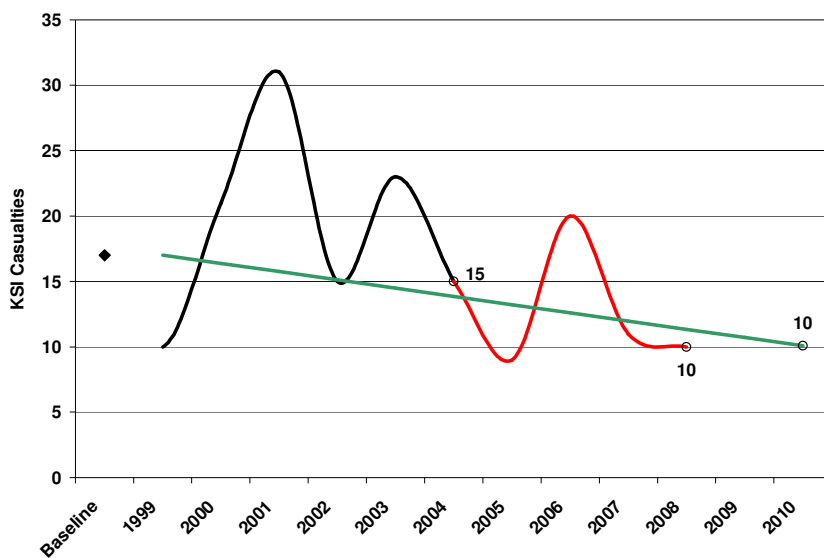


Figure 9. Progress towards 2010 – Uttlesford – Motorcycles

◆ 1994 - 1998 baseline
 — Number of KSI casualties per year since the 1994-1998 baseline average.
 — Number of KSI casualties per year since the establishment of the PSA in 2004.
 — Target. The 2010 target is a 40% reduction on the 1994-1998 baseline average. The line shows the level required to meet this

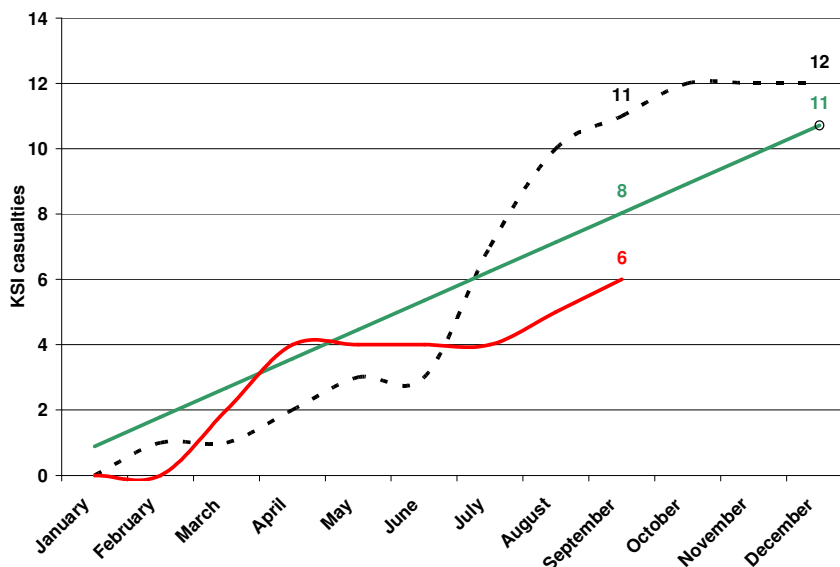


Figure 10. 2009 – Uttlesford – Motorcycles

— Cumulative KSI casualties. This shows the number of KSI casualties in 2009.
 — Target. The target line shows the level required this year to be on target for 2010.
 --- Cumulative monthly progress in 2008.

Historically, Motorcycle KSI casualties in Uttlesford have mostly been above the target line. In 2008, however, there were 10 KSI casualties, 1 less than in 2007 and now 1 KSI casualty below the target line (figure 9). After the 3rd quarter of 2009 there have been 6 motorcycle KSI casualties, 5 less than at the same stage of last year and 2 less than the target for this period (figure 10).

Drink Drive

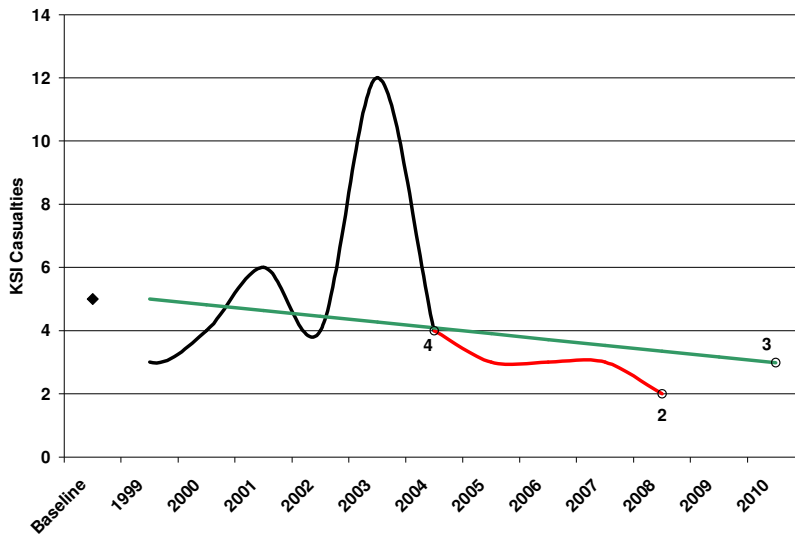


Figure 11. Progress towards 2010 – Uttlesford – Drink Drive

- ◆ 1994 - 1998 baseline
- Number of KSI casualties per year since the 1994-1998 baseline average.
- Number of KSI casualties per year since the establishment of the PSA in 2004.
- Target. The 2010 target is a 40% reduction on the 1994-1998 baseline average. The line shows the level required to meet this

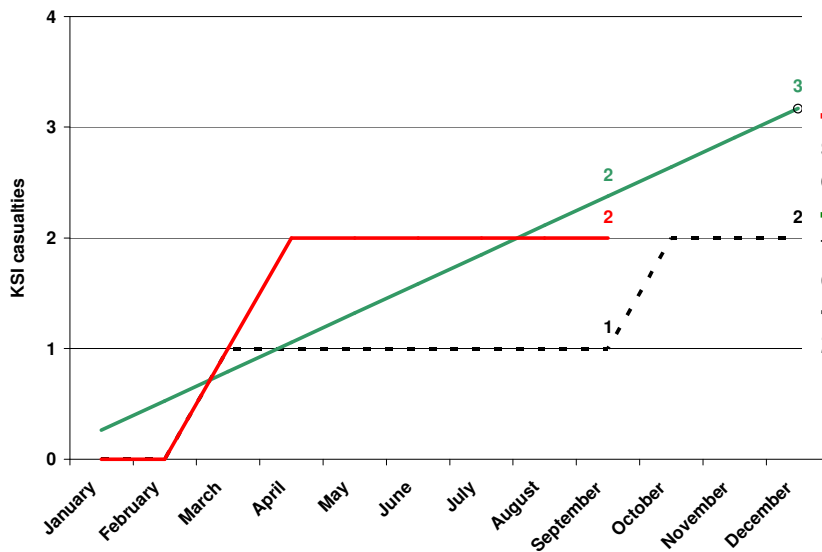


Figure 12. 2009 – Uttlesford – Drink drive

- Cumulative KSI casualties. This shows the number of KSI casualties in 2009.
- Target. The target line shows the level required this year to be on target for 2010.
- Cumulative monthly progress in 2008.

Historically, drink drive KSI casualties have been low in Uttlesford and below the baseline target since 2004. In 2008 there were 2 KSI casualties, 1 fewer than in 2007 and 1 KSI casualty below the target line (figure 11). After the 3rd quarter of 2009 there have been 2 drink drive KSI casualties, 1 more than at the same stage of last year but equal to the target for this period (figure 12).