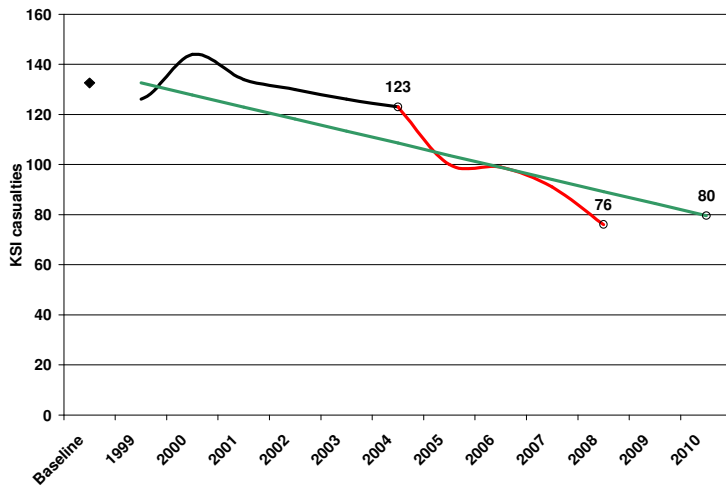


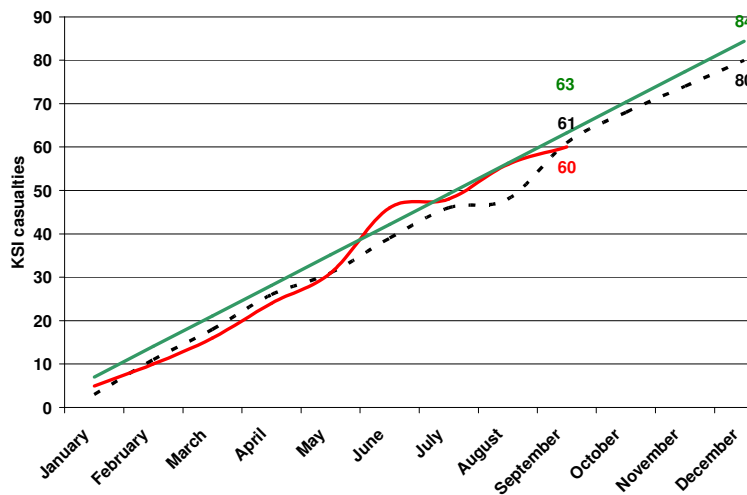
## Tendring District KSI data to end of 3<sup>rd</sup> quarter 2009 (Provisional)

### Total KSI casualties in Tendring



**Figure 1.** Progress towards 2010 - Tendring

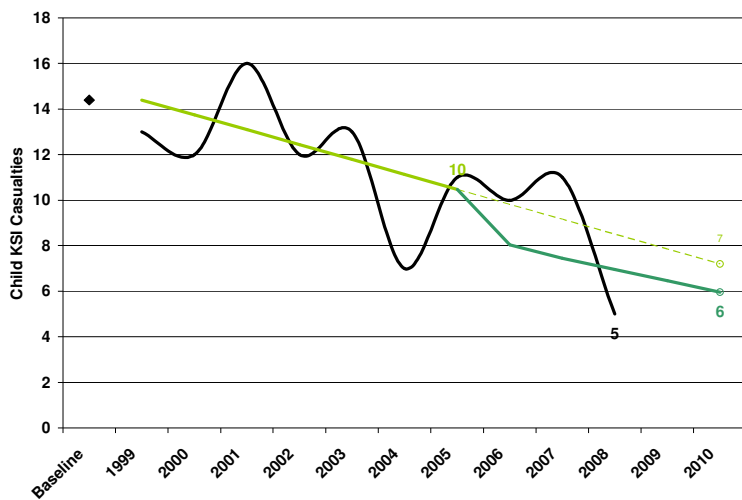
◆ 1994 - 1998 baseline  
 — Number of KSI casualties per year since the 1994-1998 baseline average.  
 — Number of KSI casualties per year since the establishment of the PSA in 2004.  
 — Target. The 2010 target is a 40% reduction on the 1994-1998 baseline average. The line shows the level required to meet this



**Figure 2.** 2009 – Tendring  
 — Cumulative KSI casualties. This shows the number of KSI casualties in 2009.  
 — Target. The target line shows the level required this year to be on target for 2010.  
 --- Cumulative monthly progress in 2008.

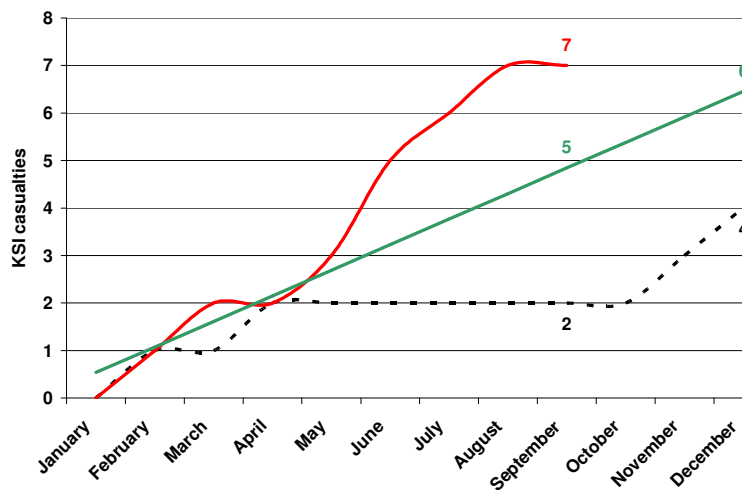
The number of KSI casualties in Tendring has not been above the target line since 2004. In 2008 there were 76 KSI casualties, 15 KSI casualties fewer than in 2007 and 13 KSI casualties under the target line (figure 1). After the 3<sup>rd</sup> quarter of 2009 there have been 60 KSI casualties, 1 less than at the same stage of last year and 3 less than the target for this period (figure 2).

## Total CHILD KSI casualties in Tendring



**Figure 3.** Progress towards 2010 - Tendring

◆ 1994 - 1998 baseline average.  
 — Number of Child KSI casualties per year since the 1994-1998 baseline average.  
 — 2010 Target. The 2010 target is a 50% reduction on the 1994-1998 baseline average. The line shows the level required to meet this target.  
 — LTP2 Target. The LTP2 target was adjusted in 2005 to further reduce the DfT target.



**Figure 4.** 2009 – Tendring  
 — Cumulative Child KSI casualties. This shows the number of KSI casualties in 2009.  
 — LTP2 Target. The target line shows the level required this year to be on target for 2010.  
 --- Cumulative monthly progress in 2008.

Historically, the number of Child KSI casualties in Tendring has fluctuated above and below the target line and adjusted target line. In 2008 there were 5 Child KSI casualties, 6 fewer than in 2007 and 2 Child KSI casualties below the adjusted target line (figure 3). After the 3<sup>rd</sup> quarter of 2009 there have been 7 Child KSI casualties, 5 more than at the same stage of last and 2 more than the target for this period (figure 4).

## Comparison with other districts

**Table 1.** KSI casualties by District 2008

	KSI casualties - 2008						KSI per 100000 population
	Population	All	Drink Drive	Motorcycles	Speed - Related	Young Drivers	
Basildon	168600	63	4	19	8	12	37.37
Braintree	139700	66	5	15	13	18	47.24
Brentwood	70900	39	0	7	4	12	55.01
Castle Point	88600	41	2	8	3	11	46.28
Chelmsford	162800	76	5	24	10	16	46.68
Colchester	170800	94	4	30	19	20	55.04
Epping	122900	113	7	27	22	21	91.94
Harlow	78100	16	1	4	1	3	20.49
Maldon	61700	37	4	7	6	9	59.97
Rochford	81100	22	4	6	3	7	27.13
<b>Tendring</b>	<b>144600</b>	<b>80</b>	<b>6</b>	<b>19</b>	<b>7</b>	<b>13</b>	<b>55.33</b>
Uttlesford	71400	59	2	12	14	13	82.63
<b>New Essex</b>	<b>1361200</b>	<b>706</b>	<b>44</b>	<b>178</b>	<b>110</b>	<b>155</b>	<b>51.87</b>

*Source: 2006 mid-year population estimates, ONS Crown Copyright Reserved [from Nomis on 23 June 2008]*

**Table 2.** KSI casualties by District 2009

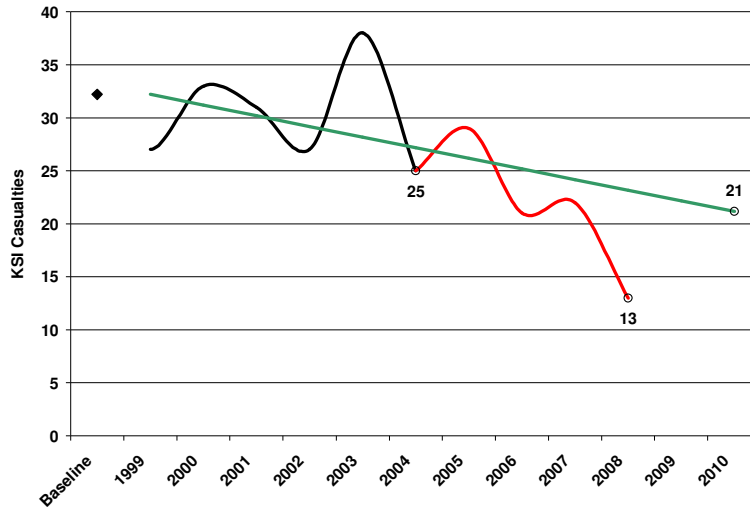
	KSI casualties - 2009 (to end Q3 ONLY)						KSI per 100000 population
	Population	All	Drink Drive	Motorcycles	Speeding	Young Drivers	
Basildon	169,800	34	1	10	3	5	20.02
Braintree	140,900	56	2	24	4	7	39.74
Brentwood	71,600	38	2	13	1	8	53.07
Castle Point	89,200	18	0	8	2	0	20.18
Chelmsford	164,500	55	6	15	4	13	33.43
Colchester	175,500	60	5	14	13	13	34.19
Epping	123,300	60	2	19	10	12	48.66
Harlow	78,300	13	0	9	2	0	16.60
Maldon	62,400	20	3	6	3	5	32.05
Rochford	82,200	30	0	14	4	7	36.50
<b>Tendring</b>	<b>146,200</b>	<b>60</b>	<b>6</b>	<b>18</b>	<b>5</b>	<b>16</b>	<b>41.04</b>
Uttlesford	72,500	32	2	6	5	4	44.14
<b>New Essex</b>	<b>1376400</b>	<b>476</b>	<b>29</b>	<b>156</b>	<b>56</b>	<b>90</b>	<b>34.58</b>

*Source: 2007 mid-year population estimates, ONS Crown Copyright Reserved [downloaded 24 July 2009]*

Tendring was ranked 3<sup>rd</sup> by number of KSI casualties in 2008 and 4<sup>th</sup> by KSI casualties per 100000 population (table 1). After the 3<sup>rd</sup> quarter of 2009 Tendring was ranked 1<sup>st</sup> by number of KSI casualties and 4<sup>th</sup> by KSI casualties per 100000 population (table 2).

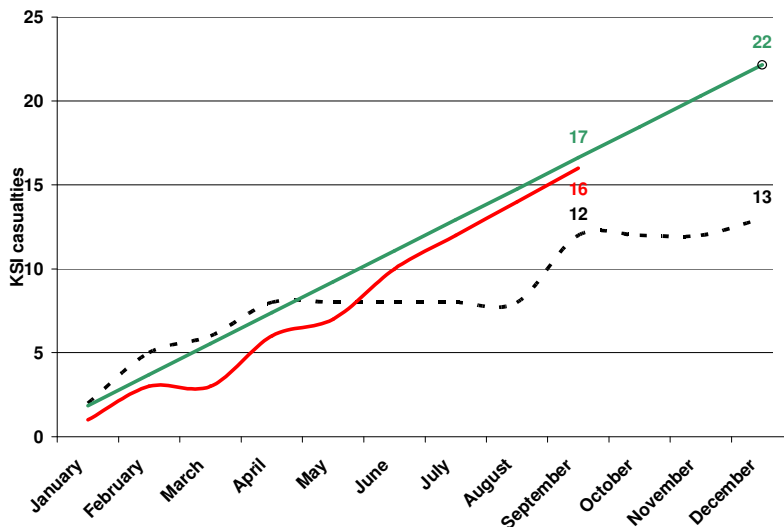
## Target groups

### Young Drivers



**Figure 5.** Progress towards 2010 – Trending – Young Drivers

- ◆ 1994 - 1998 baseline
- Number of KSI casualties per year since the 1994-1998 baseline average.
- Number of KSI casualties per year since the establishment of the PSA in 2004.
- Target. The 2010 target is a 40% reduction on the 1994-1998 baseline average. The line shows the level required to meet this

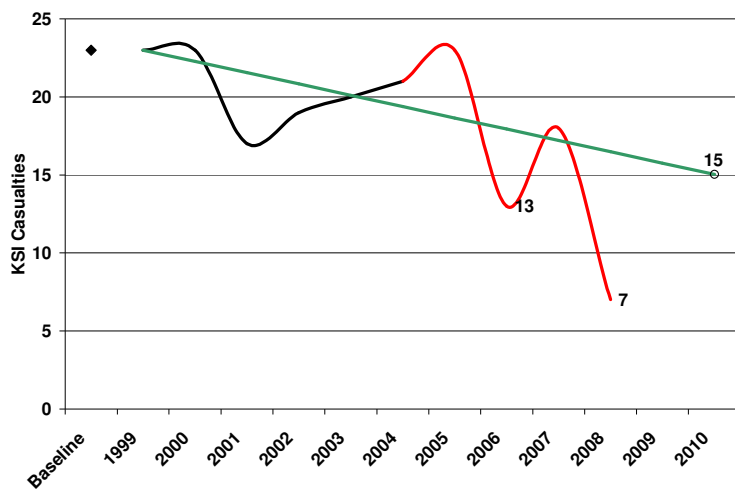


**Figure 6.** 2009 – Trending – Young Drivers

- Cumulative KSI casualties. This shows the number of KSI casualties in 2009.
- Target. The target line shows the level required this year to be on target for 2010.
- Cumulative monthly progress in 2008.

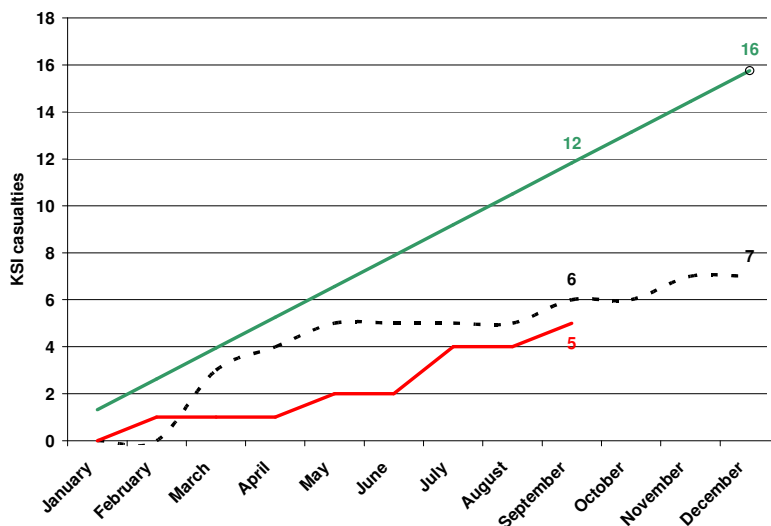
Historically, Young driver KSI casualties in Tendring have fluctuated above and below the target line since the baseline period. In 2008 there were 13 KSI casualties, 9 KSI casualties fewer than in 2007 and now 10 KSI casualties below the target line (figure 5). After the 3<sup>rd</sup> quarter of 2009 there have been 16 young driver KSI casualties, 4 more than at the same stage of last year but 1 fewer than the target for this period (figure 6).

## Speed-related



**Figure 7.** Progress towards 2010 Tending – Speed-related

- ◆ 1994 - 1998 baseline
- Number of KSI casualties per year since the 1994-1998 baseline average.
- Number of KSI casualties per year since the establishment of the PSA in 2004.
- Target. The 2010 target is a 40% reduction on the 1994-1998 baseline average. The line shows the level required to meet this

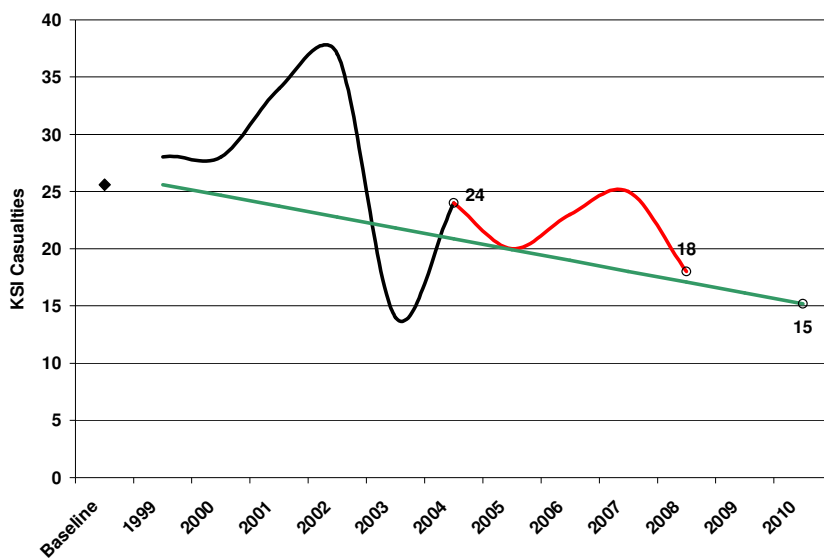


**Figure 8.** 2009 – Tending – Speed-related

- Cumulative KSI casualties. This shows the number of KSI casualties in 2008.
- Target. The target line shows the level required this year to be on target for 2010.
- Cumulative monthly progress in 2007.

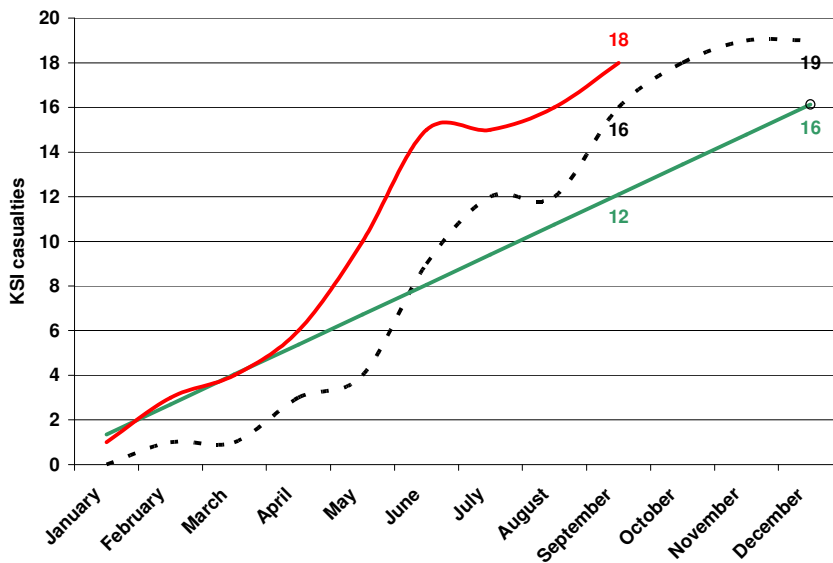
Speed related KSI casualties in Tending have fluctuated above and below target since the baseline. In 2008 there were 7 KSI casualties, 11 fewer than in 2007 and now 9 KSI casualties below the target line (figure 7). After the 3<sup>rd</sup> quarter of 2009 there have been 5 speed-related KSI casualties, 1 fewer than at the same stage of last year and 7 less than the target for this period (figure 8).

## Motorcyclists



**Figure 9.** Progress towards 2010 – Tendring – Motorcycles

◆ 1994 - 1998 baseline  
 — Number of KSI casualties per year since the 1994-1998 baseline average.  
 — Number of KSI casualties per year since the establishment of the PSA in 2004.  
 — Target. The 2010 target is a 40% reduction on the 1994-1998 baseline average. The line shows the level required to meet this

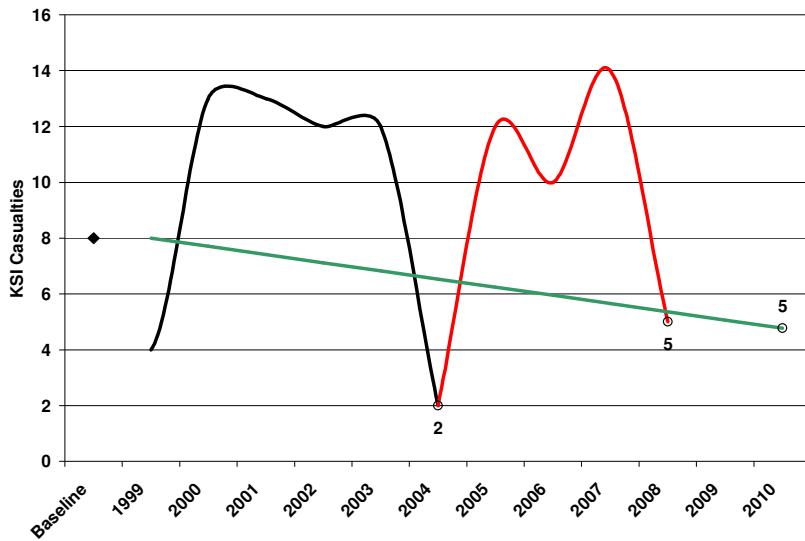


**Figure 10.** 2009 – Tendring – Motorcycles

— Cumulative KSI casualties. This shows the number of KSI casualties in 2009.  
 — Target. The target line shows the level required this year to be on target for 2010.  
 --- Cumulative monthly progress in 2008.

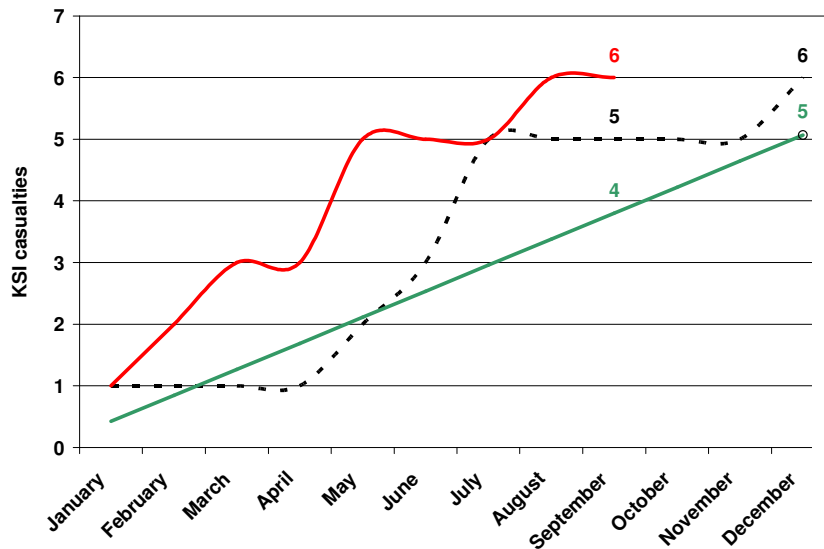
Motorcycle KSI casualties in Tendring have not been below target since 2004. In 2008 there were 18 KSI casualties, 7 KSI casualties fewer than in 2007 and 1 KSI casualty above the target line (figure 9). After the 3<sup>rd</sup> quarter of 2009 there have been 18 motorcycle KSI casualties, 2 more than at the same stage of last year and 6 higher than the target for this period (figure 10).

## Drink Drive



**Figure 11.** Progress towards 2010 – Tendring – Drink Drive

- ◆ 1994 - 1998 baseline
- Number of KSI casualties per year since the 1994-1998 baseline average.
- Number of KSI casualties per year since the establishment of the PSA in 2004.
- Target. The 2010 target is a 40% reduction on the 1994-1998 baseline average. The line shows the level required to meet this



**Figure 12.** 2009 – Tendring – Drink drive

- Cumulative KSI casualties. This shows the number of KSI casualties in 2009.
- Target. The target line shows the level required this year to be on target for 2010.
- Cumulative monthly progress in 2008.

Historically, drink drive KSI casualties in Tendring have mostly been above the target line. In 2008, however, there were 5 KSI casualties, 9 KSI casualties fewer than in 2007 and equal to the end of year target (figure 11). After the 3<sup>rd</sup> quarter of 2009 there have been 6 drink drive KSI casualties, 1 more than the same stage of last year and 2 more than the target for this period (figure 12).