

Chelmsford District KSI data to end of 3rd quarter 2009 (Provisional)

Total KSI casualties in Chelmsford

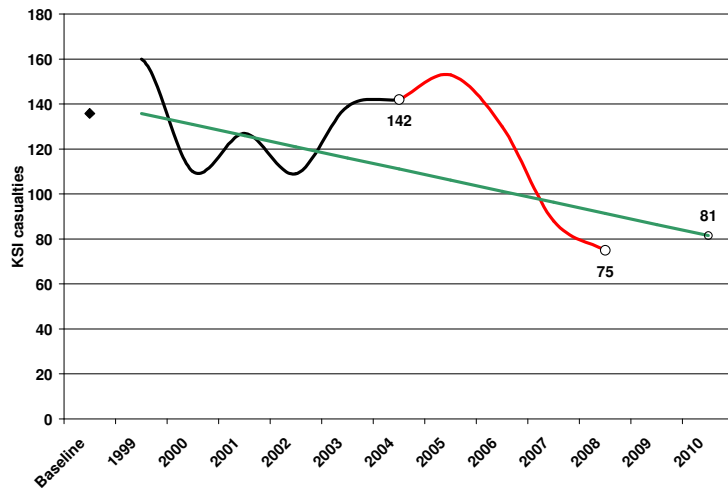


Figure 1. Progress towards 2010 – Chelmsford

◆ 1994 - 1998 baseline average.
 — Number of KSI casualties per year since the 1994-1998 baseline average.

— Number of KSI casualties per year since the establishment of the PSA in 2004.

— Target. The 2010 target is a 40% reduction on the 1994-1998 baseline average. The line shows the level required to meet this

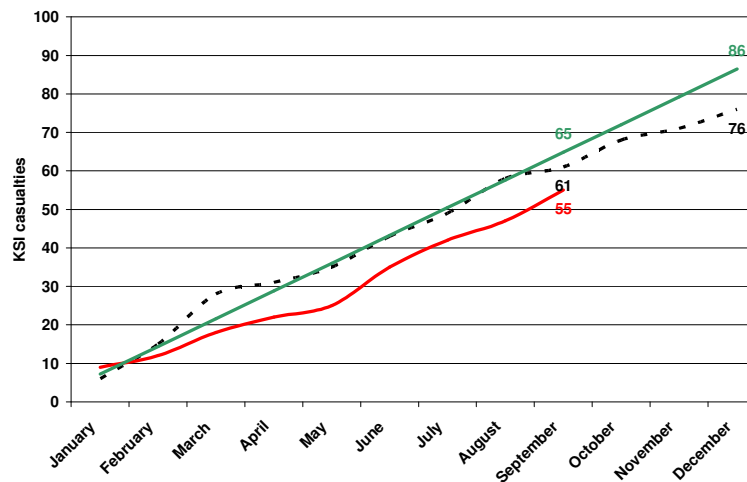


Figure 2. 2009 – Chelmsford

— Cumulative KSI casualties. This shows the number of KSI casualties in 2009.

— Target. The target line shows the level required this year to be on target for 2010.

--- Cumulative monthly progress in 2008.

The number of KSI casualties in Chelmsford had been above the target line since 2003 but decreasing since 2005. In 2008 there were 75 KSI casualties, a reduction of 16 KSI casualties from 2007 (which had been 42 KSI casualties lower than 2006) and 13 KSI casualties below the target line (figure 1). After the 3rd quarter of 2009 there have been 55 KSI casualties, 6 fewer than at the same stage of last year and 10 fewer than the target for this period (figure 2).

Total CHILD KSI casualties in Chelmsford

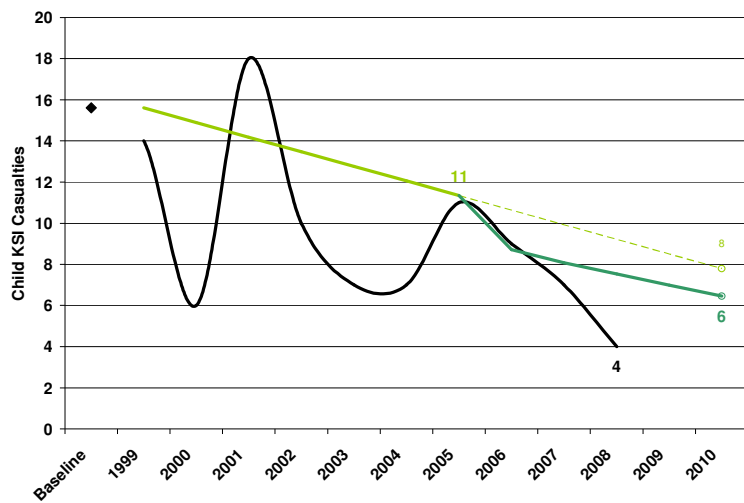


Figure 3. Progress towards 2010 - Chelmsford

◆ 1994 - 1998 baseline average.
 — Number of Child KSI casualties per year since the 1994-1998 baseline average.
 — 2010 Target. The 2010 target is a 50% reduction on the 1994-1998 baseline average. The line shows the level required to meet this target.
 — LTP2 Target. The LTP2 target was adjusted in 2005 to further reduce the DfT target.

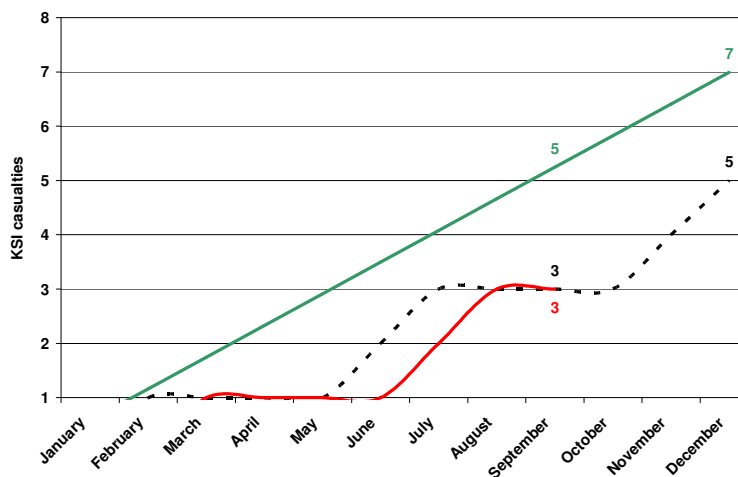


Figure 4. 2009 – Chelmsford
 — Cumulative Child KSI casualties. This shows the number of KSI casualties in 2009.
 — LTP2 Target. The target line shows the level required this year to be on target for 2010.
 --- Cumulative monthly progress in 2008.

The number of Child KSI casualties in Chelmsford has not been above the target line since 2002. In 2008 there were 4 Child KSI casualties, 3 fewer than in 2007 and 4 casualties lower than the adjusted target line (figure 3). After the 3rd quarter of 2009 there has been 3 Child KSI casualties, equal to the same stage of last year but 2 fewer than the target for this period (figure 4).

Comparison with other districts

Table 1. KSI casualties by District 2008

	Population	KSI casualties - 2008					KSI per 100000 population
		All	Drink Drive	Motorcycles	Speed - Related	Young Drivers	
Basildon	168600	63	4	19	8	12	37.37
Braintree	139700	66	5	15	13	18	47.24
Brentwood	70900	39	0	7	4	12	55.01
Castle Point	88600	41	2	8	3	11	46.28
Chelmsford	162800	76	5	24	10	16	46.68
Colchester	170800	94	4	30	19	20	55.04
Epping	122900	113	7	27	22	21	91.94
Harlow	78100	16	1	4	1	3	20.49
Maldon	61700	37	4	7	6	9	59.97
Rochford	81100	22	4	6	3	7	27.13
Tendring	144600	80	6	19	7	13	55.33
Uttlesford	71400	59	2	12	14	13	82.63
New Essex	1361200	706	44	178	110	155	51.87

Source: 2006 mid-year population estimates, ONS Crown Copyright Reserved [from Nomis on 23 June 2008]

Table 2. KSI casualties by District 2009

	Population	KSI casualties - 2009 (to end Q3 ONLY)					KSI per 100000 population
		All	Drink Drive	Motorcycles	Speeding	Young Drivers	
Basildon	169,800	34	1	10	3	5	20.02
Braintree	140,900	56	2	24	4	7	39.74
Brentwood	71,600	38	2	13	1	8	53.07
Castle Point	89,200	18	0	8	2	0	20.18
Chelmsford	164,500	55	6	15	4	13	33.43
Colchester	175,500	60	5	14	13	13	34.19
Epping	123,300	60	2	19	10	12	48.66
Harlow	78,300	13	0	9	2	0	16.60
Maldon	62,400	20	3	6	3	5	32.05
Rochford	82,200	30	0	14	4	7	36.50
Tendring	146,200	60	6	18	5	16	41.04
Uttlesford	72,500	32	2	6	5	4	44.14
New Essex	1376400	476	29	156	56	90	34.58

Source: 2007 mid-year population estimates, ONS Crown Copyright Reserved [downloaded 24 July 2009]

Chelmsford was ranked 4th by number of KSI casualties in 2008 and 8th by KSI casualties per 100000 population (table 1). After the 3rd quarter of 2009 Chelmsford was ranked 5th by number of KSI casualties and 8th by KSI casualties per 100000 population (table 2).

Target groups

Young Drivers

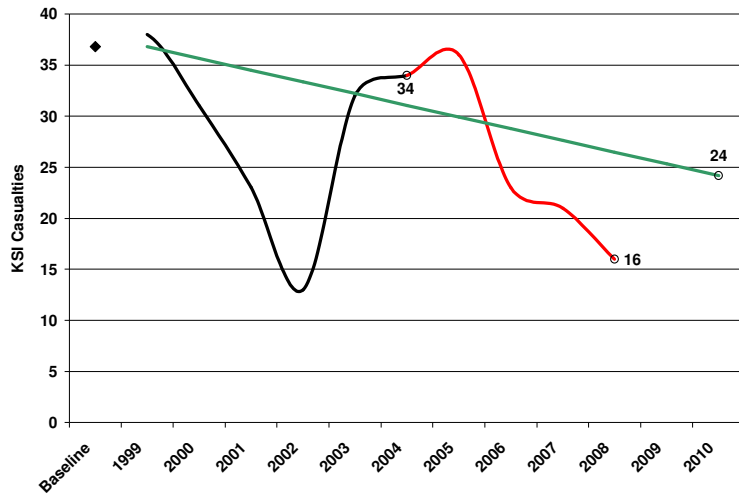


Figure 5. Progress towards 2010 – Chelmsford – Young Drivers

◆ 1994 - 1998 baseline average.
 — Number of KSI casualties per year since the 1994-1998 baseline average.

— Number of KSI casualties per year since the establishment of the PSA in 2004.

— Target. The 2010 target is a 40% reduction on the 1994-1998 baseline average. The line shows the level required to meet this

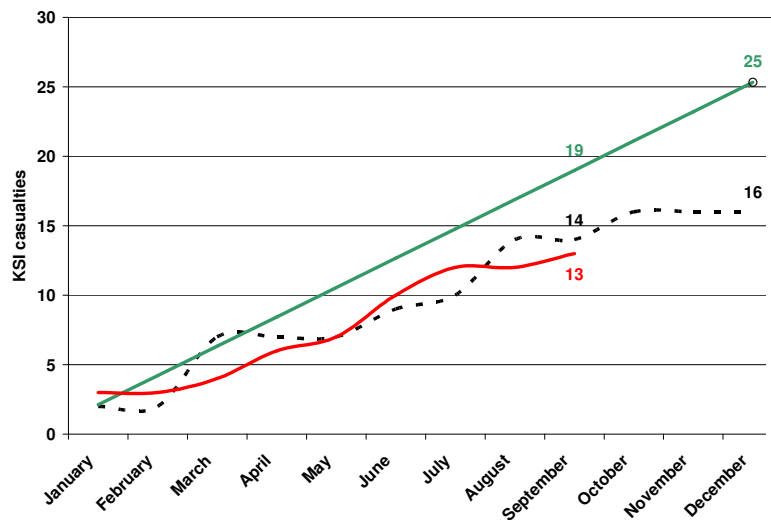


Figure 6. 2009 – Chelmsford – Young Drivers

— Cumulative KSI casualties. This shows the number of KSI casualties in 2009.

— Target. The target line shows the level required this year to be on target for 2010.

--- Cumulative monthly progress in 2008.

Young driver KSI casualties in Chelmsford have been decreasing since 2005. In 2008 there were 16 KSI casualties, 5 KSI casualties fewer than in 2007 and 10 KSI casualties below the target line (figure 5). After the 3rd quarter of 2009 there have been 13 young driver KSI casualties, 1 less than at the same stage of last year and 6 less than the target for this period (figure 6).

Speed-related

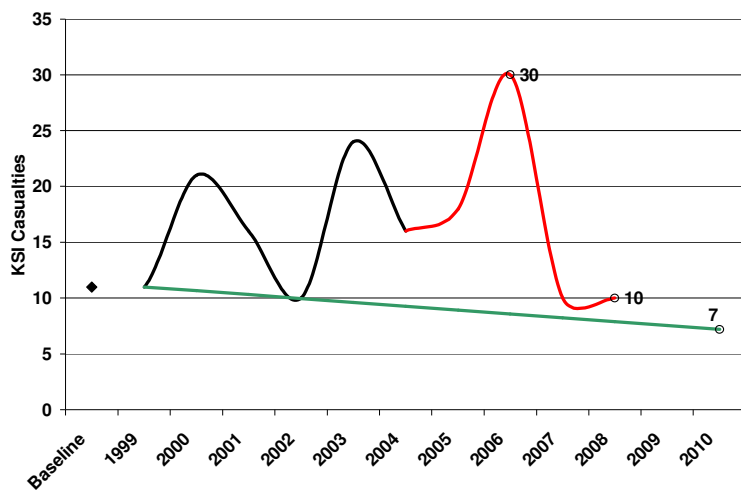


Figure 7. Progress towards 2010 Chelmsford – Speed-related

- ◆ 1994 - 1998 baseline average.
- Number of KSI casualties per year since the 1994-1998 baseline average.
- Number of KSI casualties per year since the establishment of the PSA in 2004.
- Target. The 2010 target is a 40% reduction on the 1994-1998 baseline average. The line shows the level required to meet this

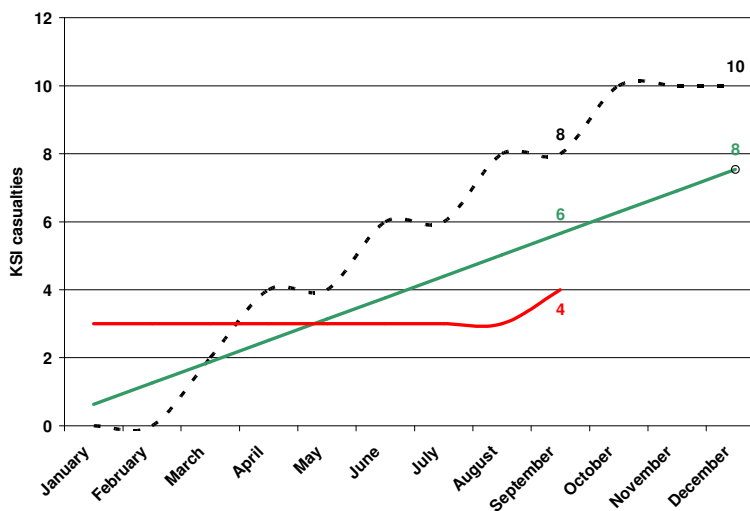


Figure 8. 2009 – Chelmsford – Speed-related

- Cumulative KSI casualties. This shows the number of KSI casualties in 2009.
- Target. The target line shows the level required this year to be on target for 2010.
- Cumulative monthly progress in 2008.

Speed related KSI casualties in Chelmsford have historically not been below target since the baseline. In 2008 there were 10 KSI casualties, the same as in 2006, 2 KSI casualties higher than the target line (figure 7). After the 3rd quarter of 2009 there have been 4 KSI casualties, 4 less than the same stage of last year and the 2 fewer than the target for this period (figure 8).

Motorcyclists

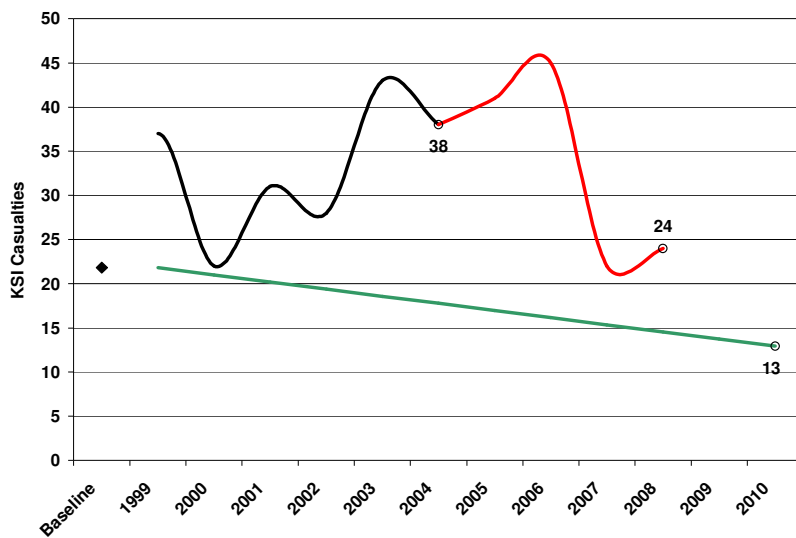


Figure 9. Progress towards 2010 – Chelmsford – Motorcycles

- ◆ 1994 - 1998 baseline average.
- Number of KSI casualties per year since the 1994-1998 baseline average.
- Number of KSI casualties per year since the establishment of the PSA in 2004.
- Target. The 2010 target is a 40% reduction on the 1994-1998 baseline average. The line shows the level required to meet this

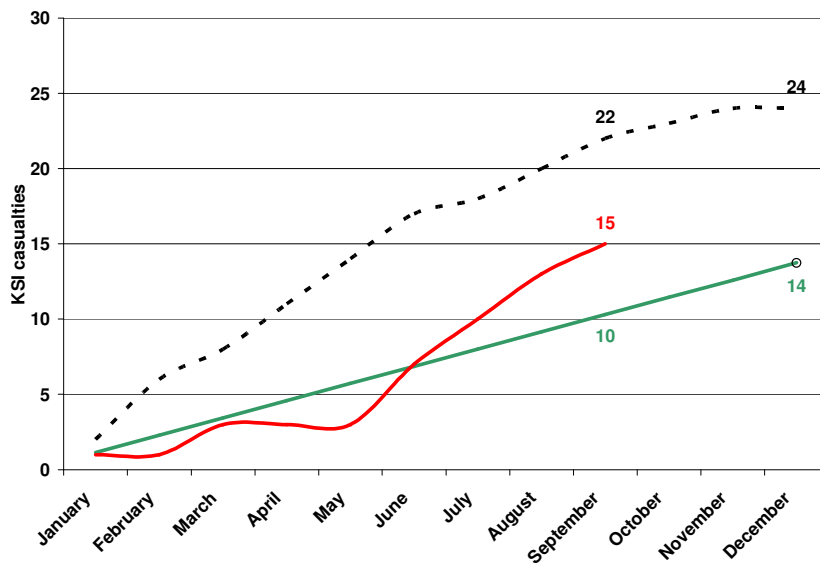


Figure 10. 2009 – Chelmsford – Motorcycles

- Cumulative KSI casualties. This shows the number of KSI casualties in 2009.
- Target. The target line shows the level required this year to be on target for 2010.
- Cumulative monthly progress in 2008.

Motorcycle KSI casualties in Chelmsford have been above target since the baseline. In 2008 there were 24 KSI casualties, 2 more KSI casualties than 2007 (which had decrease by 23 casualties from 2006) and 9 KSI casualties higher than the target line (figure 9). After the 3rd quarter of 2009 there have been 15 motorcycle KSI casualties, 7 fewer than at the same stage of last year but 5 more than the target for this period (figure 10).

Drink Drive

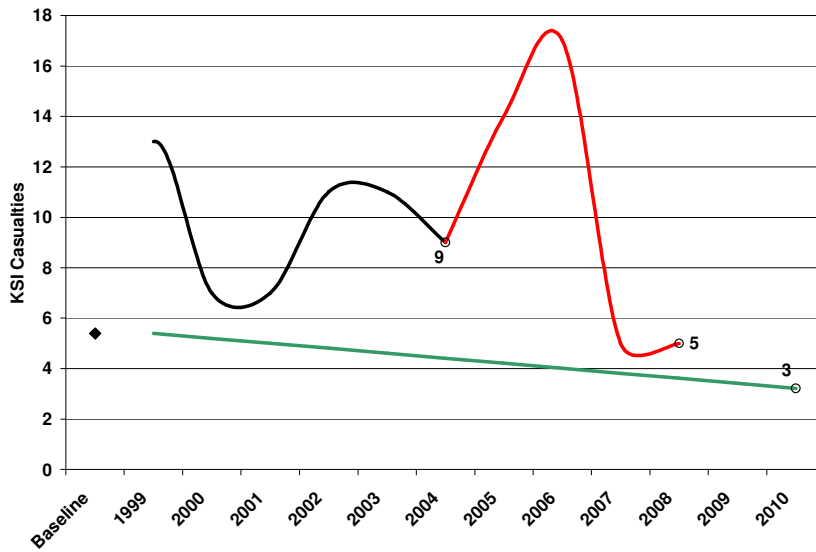


Figure 11. Progress towards 2010 – Chelmsford – Drink Drive

- ◆ 1994 - 1998 baseline average.
- Number of KSI casualties per year since the 1994-1998 baseline average.
- Number of KSI casualties per year since the establishment of the PSA in 2004.
- Target. The 2010 target is a 40% reduction on the 1994-1998 baseline average. The line shows the level required to meet this

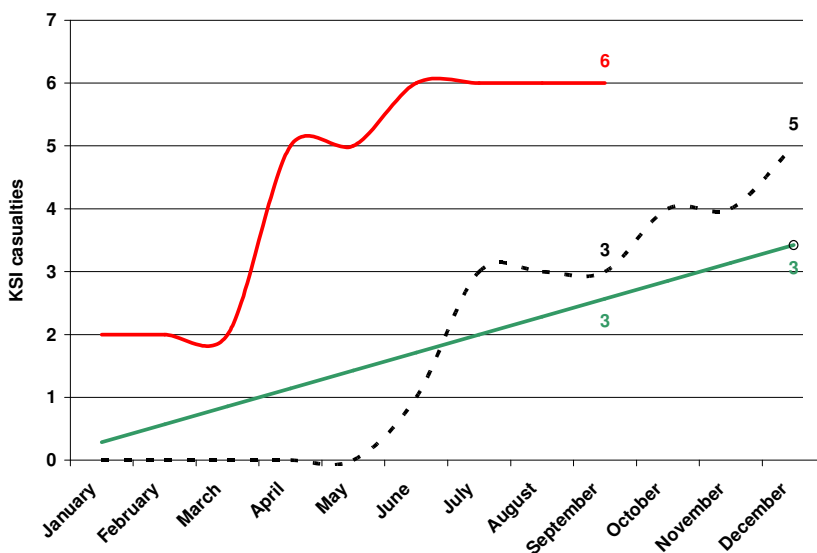


Figure 12. 2009 – Chelmsford – Drink drive

- Cumulative KSI casualties. This shows the number of KSI casualties in 2009.
- Target. The target line shows the level required this year to be on target for 2010.
- Cumulative monthly progress in 2008.

Historically, drink drive KSI casualties have been above the baseline target in Chelmsford. In 2008 there were 5 KSI casualties, equal to 2007 and 1 casualty above the target line (figure 11). After the 3rd quarter of 2009 there have been 6 drink drive KSI casualties, 3 more than at the same stage of last year and 3 more than the target for this period (figure 12).