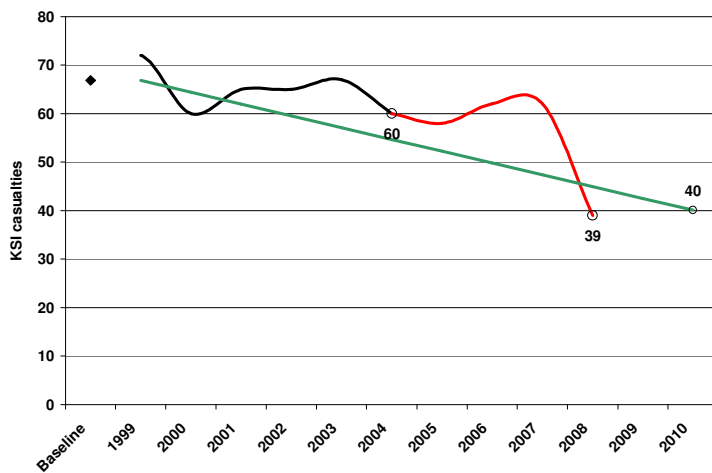


## Brentwood District KSI data to end of 3<sup>rd</sup> quarter 2009 (Provisional)

### Total KSI casualties in Brentwood

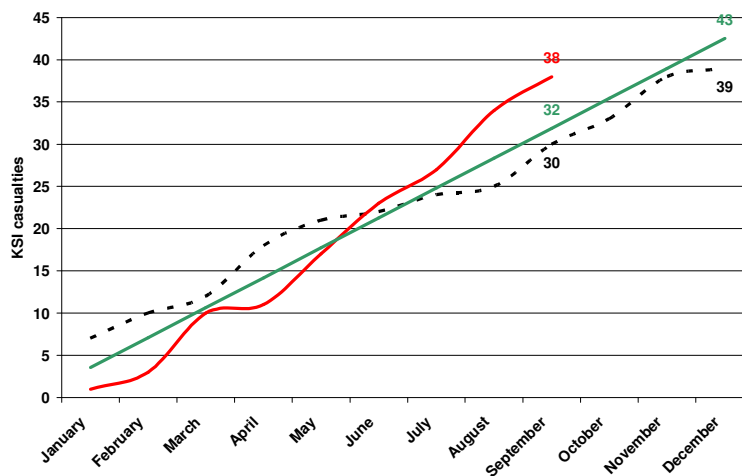


**Figure 1.** Progress towards 2010 - Brentwood

◆ 1994 - 1998 baseline average.  
 — Number of KSI casualties per year since the 1994-1998 baseline average.

— Number of KSI casualties per year since the establishment of the PSA in 2004.

— Target. The 2010 target is a 40% reduction on the 1994-1998 baseline average. The line shows the level required to meet this



**Figure 2.** 2009 – Brentwood

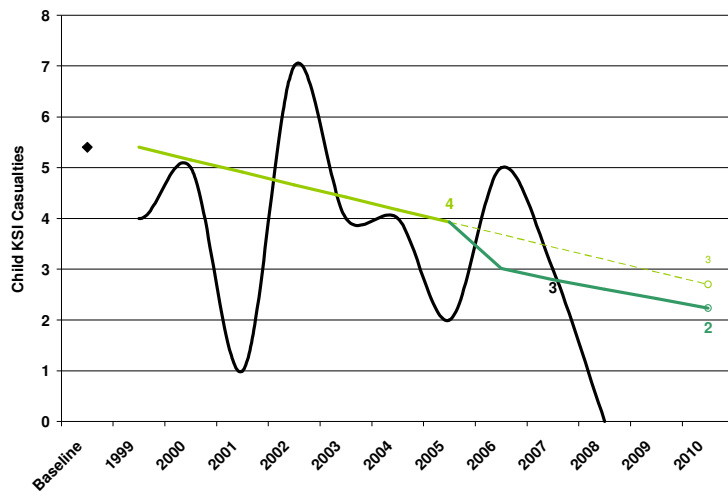
— Cumulative KSI casualties. This shows the number of KSI casualties so far in 2009.

— Target. The target line shows the level required this year to be on target for 2010.

--- Cumulative monthly progress in 2008.

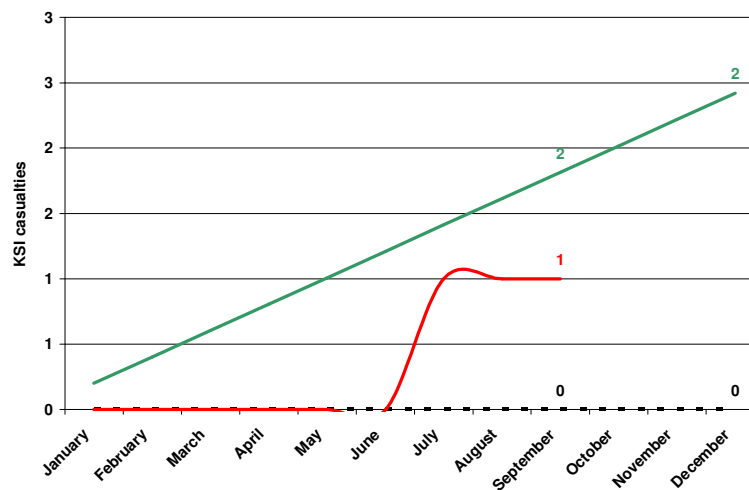
The number of KSI casualties in Brentwood had been above the target line since 2001. In 2008, however, there were 39 KSI casualties, a reduction of 23 KSI casualties from 2007 and 6 KSI casualties lower than the target line (figure 1). After the 3<sup>rd</sup> quarter of 2009 there have been 38 KSI casualties, 8 more than at the same stage of last year and 6 more than the target for this period (figure 2).

## Total CHILD KSI casualties in Brentwood



**Figure 3.** Progress towards 2010 - Brentwood

- ◆ 1994 - 1998 baseline average.
- Number of Child KSI casualties per year since the 1994-1998 baseline average.
- 2010 Target. The 2010 target is a 50% reduction on the 1994-1998 baseline average. The line shows the level required to meet this target.
- LTP2 Target. The LTP2 target was adjusted in 2005 to further



**Figure 4.** 2009 – Brentwood

- Cumulative Child KSI casualties. This shows the number of KSI casualties in 2009.
- LTP2 Target. The target line shows the level required this year to be on target for 2010.
- Cumulative monthly progress in 2008.

Historically, the number of Child KSI casualties in Brentwood has fluctuated above and below the target line. In 2008, however, there were 0 KSI casualties, 3 casualties fewer than in 2007 and 3 casualties less than the target (figure 3). After the 3<sup>rd</sup> quarter of 2009 there have been 1 Child KSI casualties, 1 more than at the same stage of last year but 1 less than the target for this period (figure 4).

## Comparison with other districts

**Table 1.** KSI casualties by District 2008

	Population	KSI casualties - 2008					KSI per 100000 population
		All	Drink Drive	Motorcycles	Speed - Related	Young Drivers	
Basildon	168600	63	4	19	8	12	37.37
Braintree	139700	66	5	15	13	18	47.24
<b>Brentwood</b>	<b>70900</b>	<b>39</b>	<b>0</b>	<b>7</b>	<b>4</b>	<b>12</b>	<b>55.01</b>
Castle Point	88600	41	2	8	3	11	46.28
Chelmsford	162800	76	5	24	10	16	46.68
Colchester	170800	94	4	30	19	20	55.04
Epping	122900	113	7	27	22	21	91.94
Harlow	78100	16	1	4	1	3	20.49
Maldon	61700	37	4	7	6	9	59.97
Rochford	81100	22	4	6	3	7	27.13
Tendring	144600	80	6	19	7	13	55.33
Uttlesford	71400	59	2	12	14	13	82.63
<b>New Essex</b>	<b>1361200</b>	<b>706</b>	<b>44</b>	<b>178</b>	<b>110</b>	<b>155</b>	<b>51.87</b>

*Source: 2006 mid-year population estimates, ONS Crown Copyright Reserved [from Nomis on 23 June 2008]*

**Table 2.** KSI casualties by District 2009

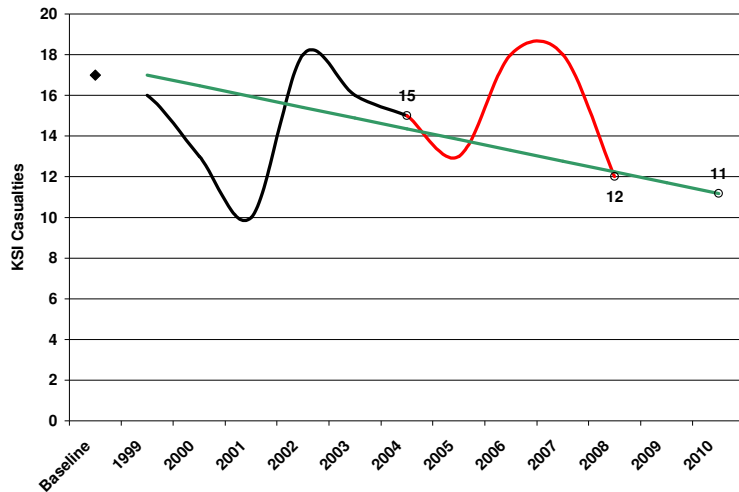
	Population	KSI casualties - 2009 (to end Q3 ONLY)					KSI per 100000 population
		All	Drink Drive	Motorcycles	Speeding	Young Drivers	
Basildon	169,800	34	1	10	3	5	20.02
Braintree	140,900	56	2	24	4	7	39.74
<b>Brentwood</b>	<b>71,600</b>	<b>38</b>	<b>2</b>	<b>13</b>	<b>1</b>	<b>8</b>	<b>53.07</b>
Castle Point	89,200	18	0	8	2	0	20.18
Chelmsford	164,500	55	6	15	4	13	33.43
Colchester	175,500	60	5	14	13	13	34.19
Epping	123,300	60	2	19	10	12	48.66
Harlow	78,300	13	0	9	2	0	16.60
Maldon	62,400	20	3	6	3	5	32.05
Rochford	82,200	30	0	14	4	7	36.50
Tendring	146,200	60	6	18	5	16	41.04
Uttlesford	72,500	32	2	6	5	4	44.14
<b>New Essex</b>	<b>1376400</b>	<b>476</b>	<b>29</b>	<b>156</b>	<b>56</b>	<b>90</b>	<b>34.58</b>

*Source: 2007 mid-year population estimates, ONS Crown Copyright Reserved [downloaded 24 July 2009]*

Brentwood was ranked 9<sup>th</sup> by number of KSI casualties in 2008 and 6<sup>th</sup> by KSI casualties per 100000 population (table 1). After the 3<sup>rd</sup> quarter of 2009, Brentwood was ranked 6<sup>th</sup> by number of KSI casualties and 1<sup>st</sup> by KSI casualties per 100000 population (table 2).

## Target groups

### Young Drivers

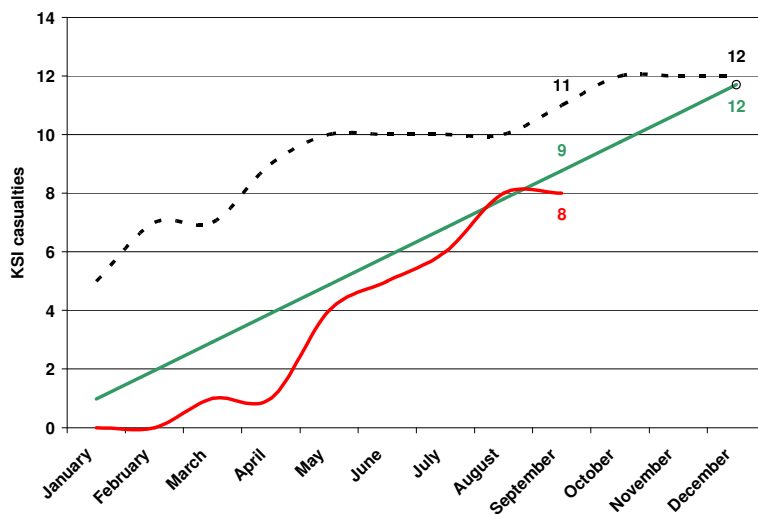


**Figure 5.** Progress towards 2010 – Brentwood – Young Drivers

◆ 1994 - 1998 baseline average.  
 — Number of KSI casualties per year since the 1994-1998 baseline average.

— Number of KSI casualties per year since the establishment of the PSA in 2004.

— Target. The 2010 target is a 40% reduction on the 1994-1998 baseline average. The line shows the level required to meet this



**Figure 6.** 2009 – Brentwood – Young Drivers

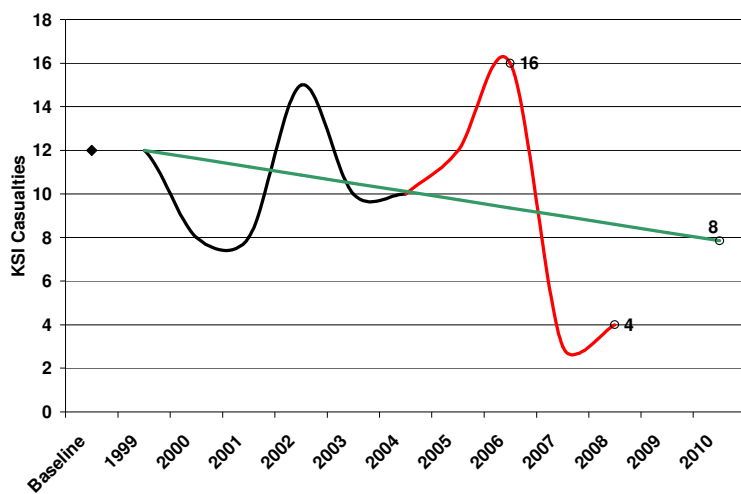
— Cumulative KSI casualties. This shows the number of KSI casualties in 2009.

— Target. The target line shows the level required this year to be on target for 2010.

--- Cumulative monthly progress in 2008.

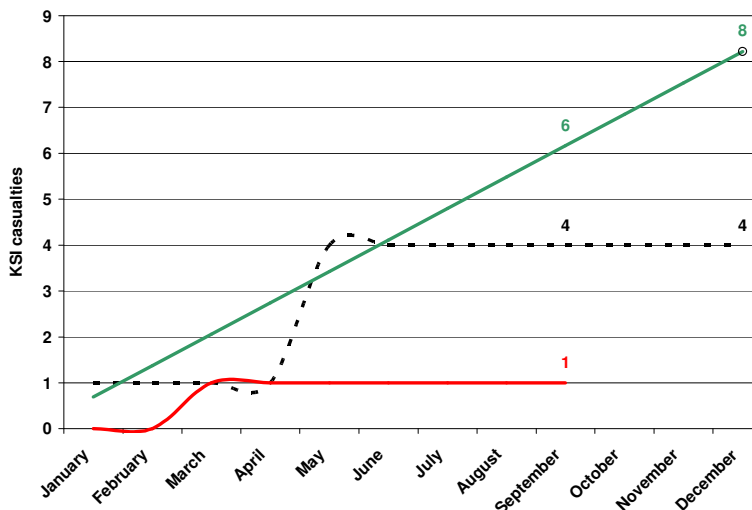
Young driver KSI casualties in Brentwood had been mostly above the target line since 2002. In 2008, however, there were 12 KSI casualties, 6 fewer than in 2007 and equal to the end of year target (figure 5). After the 3<sup>rd</sup> quarter of 2009 there have been 8 Young driver KSI casualties, 3 fewer than at the same stage of last year and 1 less than the target for this period (figure 6).

## Speed-related



**Figure 7.** Progress towards 2010 Brentwood – Speed-related

- ◆ 1994 - 1998 baseline average.
- Number of KSI casualties per year since the 1994-1998 baseline average.
- Number of KSI casualties per year since the establishment of the PSA in 2004.
- Target. The 2010 target is a 40% reduction on the 1994-1998 baseline average. The line shows the level required to meet this

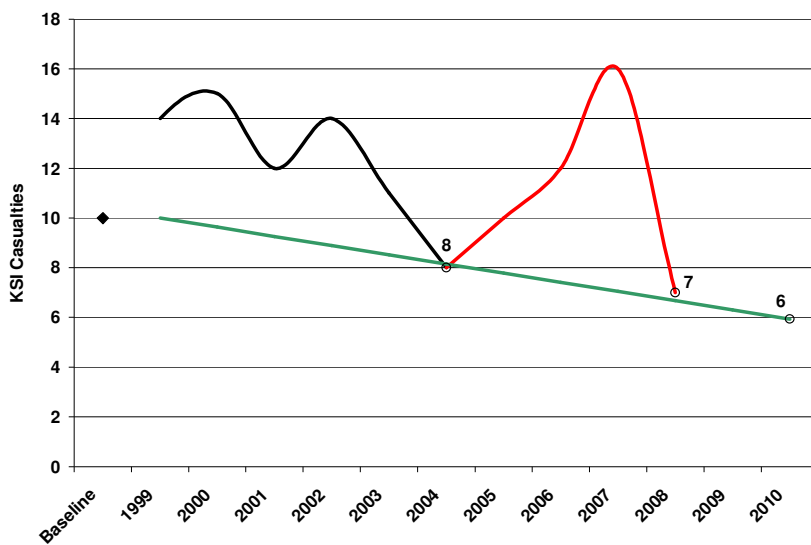


**Figure 8.** 2009 – Brentwood – Speed-related

- Cumulative KSI casualties. This shows the number of KSI casualties in 2009.
- Target. The target line shows the level required this year to be on target for 2010.
- Cumulative monthly progress in 2008.

Speed related KSI casualties in Brentwood have historically fluctuated above and below the baseline average. In 2008 there were 4 KSI casualties, 1 more than in 2007 (which had decreased by 11 KSI casualties from 2006), and 5 KSI casualties below the target line (figure 7). After the 3<sup>rd</sup> quarter of 2009 there has been 1 speed related KSI casualty, 3 less than at the same stage of last year and 5 fewer than the target for this period (figure 8).

## Motorcyclists

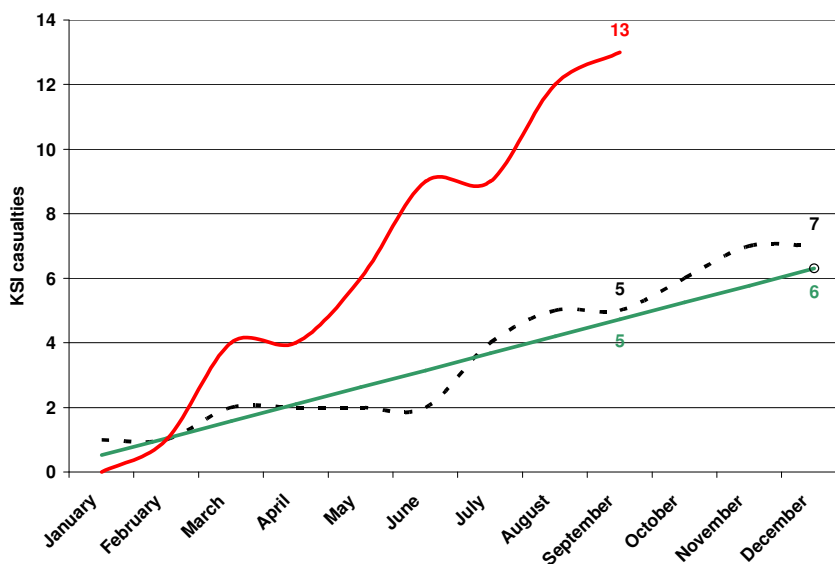


**Figure 9.** Progress towards 2010 – Brentwood – Motorcycles

◆ 1994 - 1998 baseline average.  
 — Number of KSI casualties per year since the 1994-1998 baseline average.

— Number of KSI casualties per year since the establishment of the PSA in 2004.

— Target. The 2010 target is a 40% reduction on the 1994-1998 baseline average. The line shows the level required to meet this



**Figure 10.** 2009 – Brentwood – Motorcycles

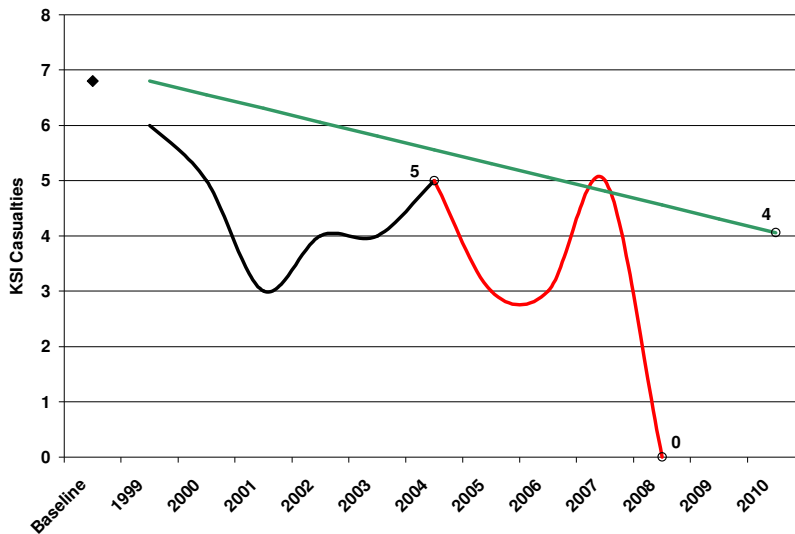
— Cumulative KSI casualties. This shows the number of KSI casualties in 2009.

— Target. The target line shows the level required this year to be on target for 2010.

--- Cumulative monthly progress in 2008.

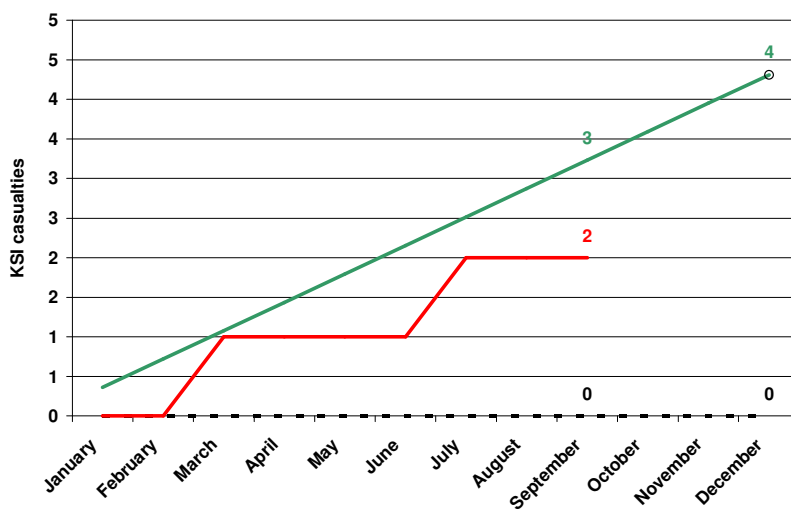
Motorcycle KSI casualties in Brentwood had been above the target line and increasing since 2004. In 2008, however, there were 7 KSI casualties, 9 fewer KSI casualties than 2007 and equal to the target line (figure 9). After the 3<sup>rd</sup> quarter of 2009 there have been 13 motorcycle KSI casualties, 8 more than at the same stage of last year and 8 more than the target for this period (figure 10).

## Drink Drive



**Figure 11.** Progress towards 2010 – Brentwood – Drink Drive

- ◆ 1994 - 1998 baseline average.
- Number of KSI casualties per year since the 1994-1998 baseline average.
- Number of KSI casualties per year since the establishment of the PSA in 2004.
- Target. The 2010 target is a 40% reduction on the 1994-1998 baseline average. The line shows the level required to meet this



**Figure 12.** 2009 – Brentwood – Drink drive

- Cumulative KSI casualties. This shows the number of KSI casualties in 2009.
- Target. The target line shows the level required this year to be on target for 2010.
- Cumulative monthly progress in 2008.

Historically, drink drive KSI casualties have not been above the target in Brentwood since the baseline. In 2008 there were 0 KSI casualties, 5 fewer KSI casualties than in 2007 and 5 fewer KSI casualties than the end of year target (figure 11). After the 3<sup>rd</sup> quarter of 2009 there has been 2 drink drive KSI casualties, 2 more than the same stage of last year but 1 less than the target for this period (figure 12).