

Braintree District KSI data to end of 3rd quarter 2009 (Provisional)

Total KSI casualties in Braintree

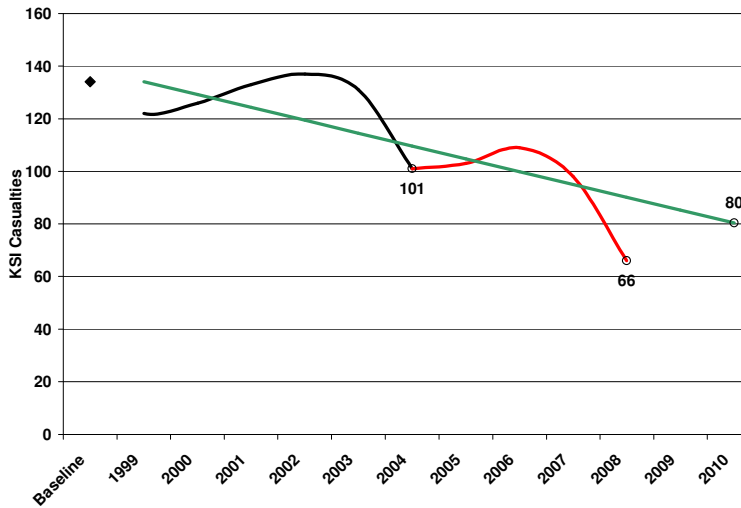


Figure 1. Progress towards 2010 - Braintree

- ◆ 1994 - 1998 baseline average.
- Number of KSI casualties per year since the 1994-1998 baseline average.
- Number of KSI casualties per year since the establishment of the PSA in 2004.
- Target. The 2010 target is a 40% reduction on the 1994-1998 baseline average. The line shows the level required to meet this

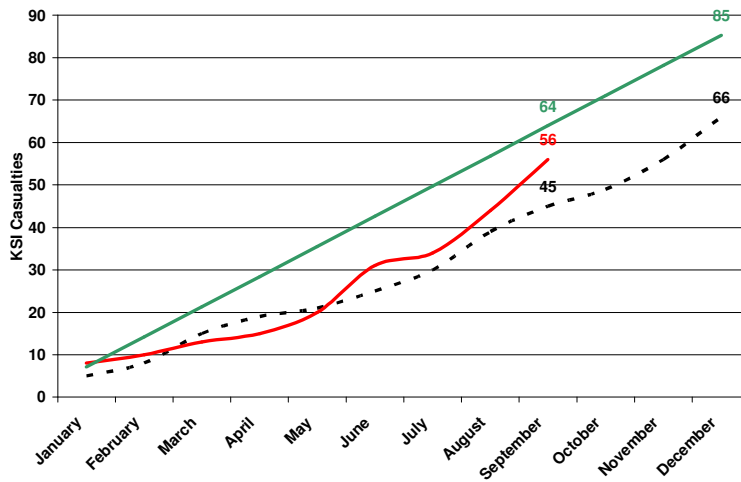


Figure 2. 2009 – Braintree

- Cumulative KSI casualties. This shows the number of KSI casualties in 2009.
- Target. The target line shows the level required this year to be on target for 2010.
- Cumulative monthly progress in 2008.

The number of KSI casualties in Braintree has historically fluctuated above and below the target line since the baseline period. In 2008 there were 66 KSI casualties, 32 less KSI casualties than in 2007 and 24 fewer than the target line (figure 1). After the 3rd quarter of 2009 there have been 56 KSI casualties, 9 more than at the same stage last year but 8 less than the target for this period (figure 2).

Total CHILD KSI casualties in Braintree

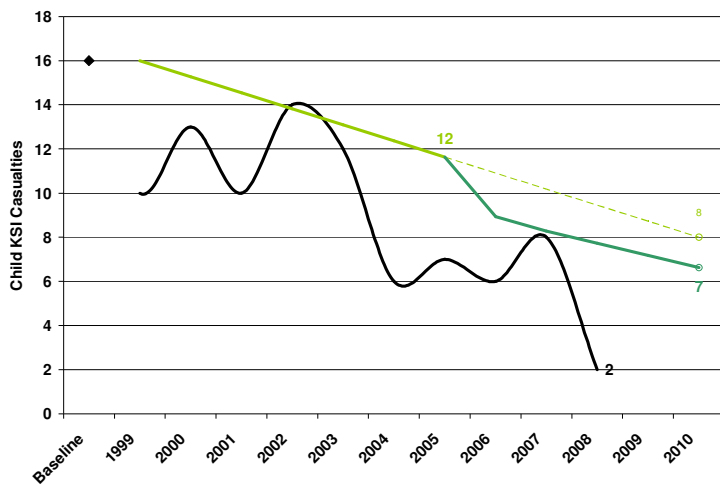


Figure 3. Progress towards 2010 - Braintree

◆ 1994 - 1998 baseline average.
 — Number of Child KSI casualties per year since the 1994-1998 baseline average.

— 2010 Target. The 2010 target is a 50% reduction on the 1994-1998 baseline average. The line shows the level required to meet this target.

— LTP2 Target. The LTP2 target was adjusted in 2005 to further reduce the DfT target.

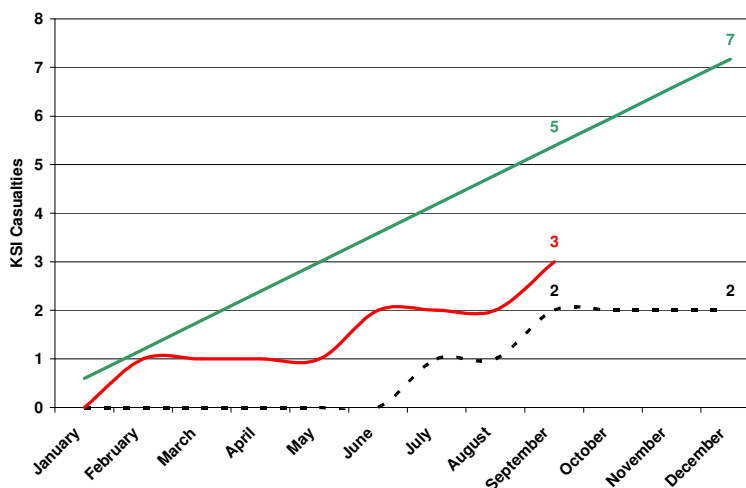


Figure 4. 2009 – Braintree

— Cumulative Child KSI casualties. This shows the number of KSI casualties in 2009.

— LTP2 Target. The target line shows the level required this year to be on target for 2010.

--- Cumulative monthly progress in 2008.

The number of Child KSI casualties in Braintree has been below the target line since 2003. 2008 finished with 2 Child KSI casualties, 8 child KSI casualties fewer than 2007 and 6 lower than the adjusted target line (figure 3). After the 3rd quarter of 2009 there has been 3 Child KSI casualties, 1 more than at the same stage of last year but 2 fewer than the target for this period (figure 4).

Comparison with other districts

Table 1. KSI casualties by District 2008

	KSI casualties - 2008						KSI per 100000 population
	Population	All	Drink Drive	Motorcycles	Speed - Related	Young Drivers	
Basildon	168600	63	4	19	8	12	37.37
Braintree	139700	66	5	15	13	18	47.24
Brentwood	70900	39	0	7	4	12	55.01
Castle Point	88600	41	2	8	3	11	46.28
Chelmsford	162800	76	5	24	10	16	46.68
Colchester	170800	94	4	30	19	20	55.04
Epping	122900	113	7	27	22	21	91.94
Harlow	78100	16	1	4	1	3	20.49
Maldon	61700	37	4	7	6	9	59.97
Rochford	81100	22	4	6	3	7	27.13
Tendring	144600	80	6	19	7	13	55.33
Uttlesford	71400	59	2	12	14	13	82.63
New Essex	1361200	706	44	178	110	155	51.87

Source: 2006 mid-year population estimates, ONS Crown Copyright Reserved [from Nomis on 23 June 2008]

Table 2. KSI casualties by District 2009

	KSI casualties - 2009 (to end Q3 ONLY)						KSI per 100000 population
	Population	All	Drink Drive	Motorcycles	Speeding	Young Drivers	
Basildon	169,800	34	1	10	3	5	20.02
Braintree	140,900	56	2	24	4	7	39.74
Brentwood	71,600	38	2	13	1	8	53.07
Castle Point	89,200	18	0	8	2	0	20.18
Chelmsford	164,500	55	6	15	4	13	33.43
Colchester	175,500	60	5	14	13	13	34.19
Epping	123,300	60	2	19	10	12	48.66
Harlow	78,300	13	0	9	2	0	16.60
Maldon	62,400	20	3	6	3	5	32.05
Rochford	82,200	30	0	14	4	7	36.50
Tendring	146,200	60	6	18	5	16	41.04
Uttlesford	72,500	32	2	6	5	4	44.14
New Essex	1376400	476	29	156	56	90	34.58

Source: 2007 mid-year population estimates, ONS Crown Copyright Reserved [downloaded 24 July 2009]

Braintree was ranked 5th by number of KSI casualties in 2008 and 7th by KSI casualties per 100000 population (table 1). After the 3rd quarter of 2009 Braintree was ranked 4th by number of KSI casualties and 5th by KSI casualties per 100000 population (table 2).

Target groups

Young Drivers

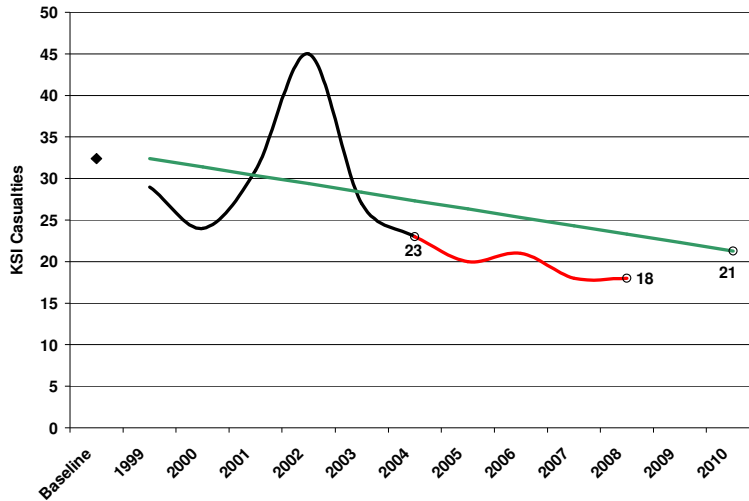


Figure 5. Progress towards 2010 – Braintree – Young Drivers

- ◆ 1994 - 1998 baseline average.
- Number of KSI casualties per year since the 1994-1998 baseline average.
- Number of KSI casualties per year since the establishment of the PSA in 2004.
- Target. The 2010 target is a 40% reduction on the 1994-1998 baseline average. The line shows the level required to meet this

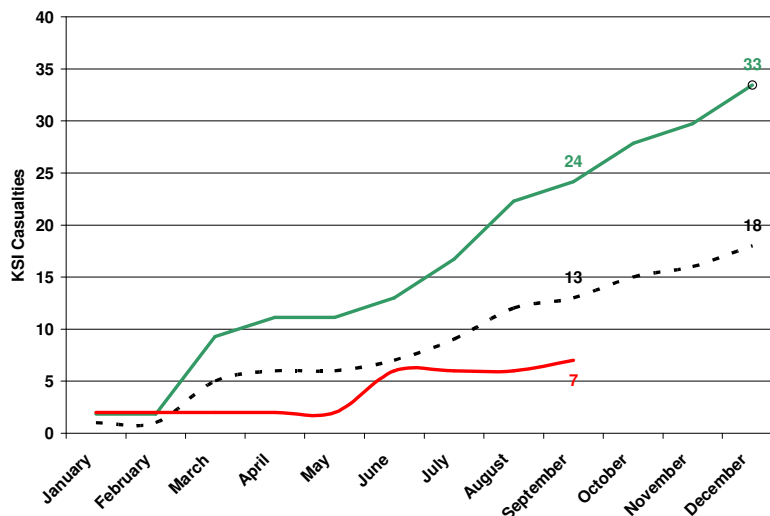


Figure 6. 2009 – Braintree – Young Drivers

- Cumulative KSI casualties. This shows the number of KSI casualties in 2009.
- Target. The target line shows the level required this year to be on target for 2010.
- Cumulative monthly progress in 2008.

Young driver KSI casualties in Braintree have been below target since 2003 and decreasing. 2008, however, finished with 18 KSI casualties, no reduction from 2007 but still 5 casualties below the target line (figure 5). After the 3rd quarter of 2009 there have been 7 Young driver KSI casualties, 6 fewer than at the same stage of last year and 17 fewer than the target for this period (figure 6).

Speed-related

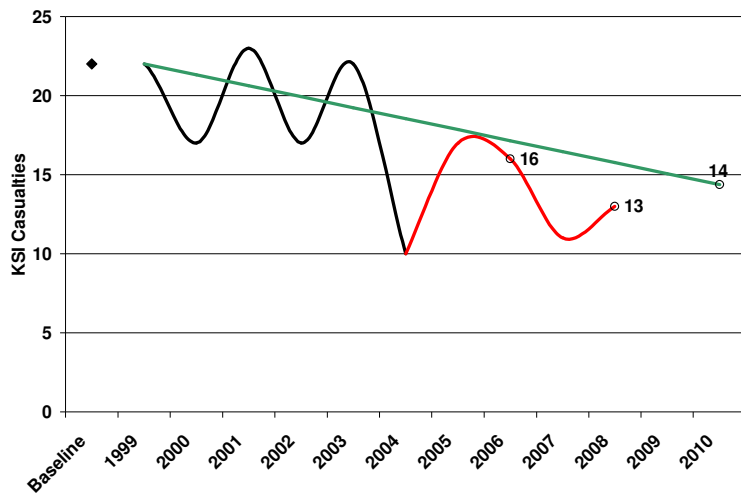


Figure 7. Progress towards 2010 Braintree – Speed-related

- ◆ 1994 - 1998 baseline average.
- Number of KSI casualties per year since the 1994-1998 baseline average.
- Number of KSI casualties per year since the establishment of the PSA in 2004.
- Target. The 2010 target is a 40% reduction on the 1994-1998 baseline average. The line shows the level required to meet this

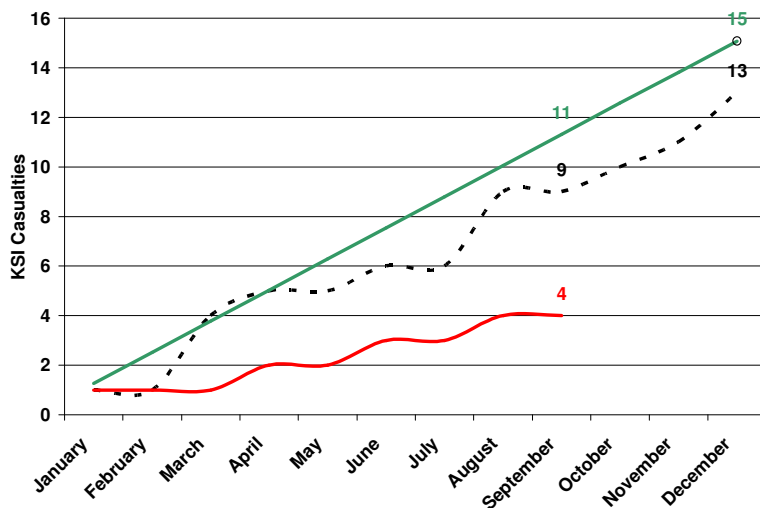


Figure 8. 2009 – Braintree – Speed-related

- Cumulative KSI casualties. This shows the number of KSI casualties in 2009.
- Target. The target line shows the level required this year to be on target for 2010.
- Cumulative monthly progress in 2008.

Speed related KSI casualties in Braintree have historically fluctuated above and below the baseline target but have been below the target line since 2004. In 2008 there were a total of 13 KSI casualties, 2 casualties more than in 2007 but still 3 casualties below the target line (figure 7). After the 3rd quarter of 2009 there have been 4 speed-related KSI casualties, 5 fewer than at the same stage of last year and 7 less than the target for this period (figure 8).

Motorcyclists

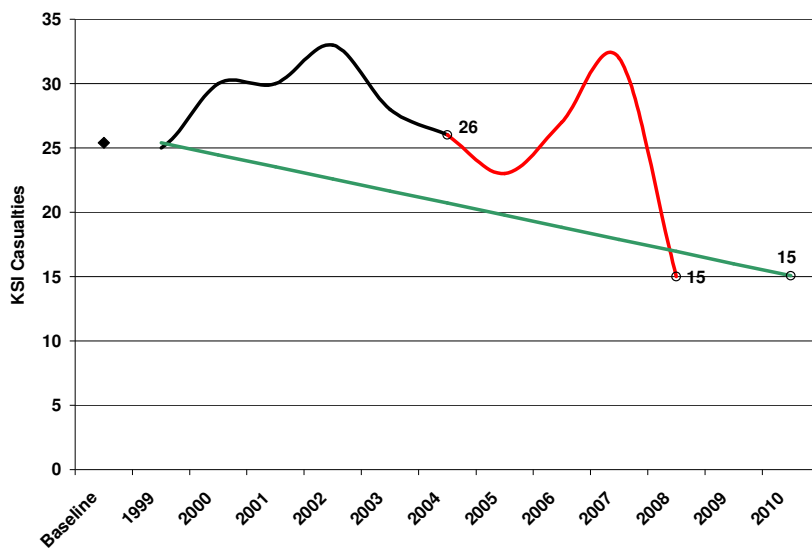


Figure 9. Progress towards 2010 – Braintree – Motorcycles

◆ 1994 - 1998 baseline average.
 — Number of KSI casualties per year since the 1994-1998 baseline average.

— Number of KSI casualties per year since the establishment of the PSA in 2004.

— Target. The 2010 target is a 40% reduction on the 1994-1998 baseline average. The line shows the level required to meet this

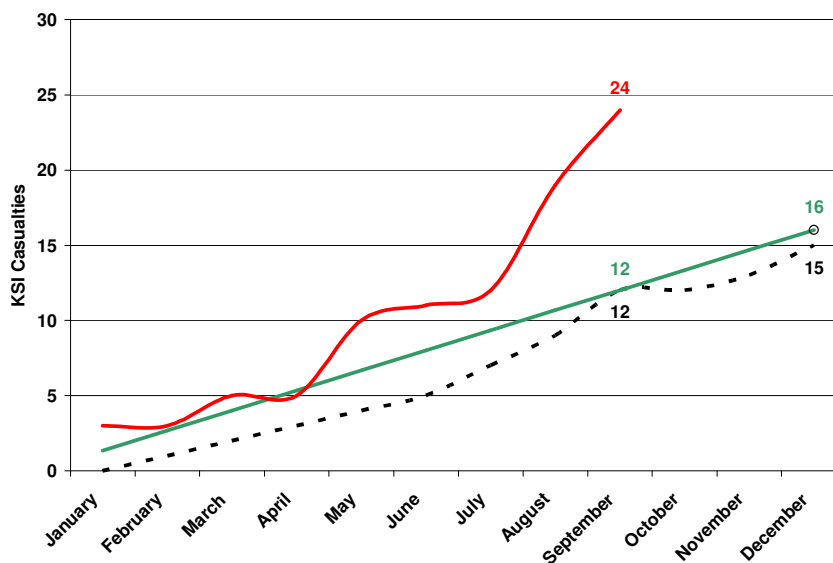


Figure 10. 2009 – Braintree – Motorcycles

— Cumulative KSI casualties. This shows the number of KSI casualties in 2009.

— Target. The target line shows the level required this year to be on target for 2010.

--- Cumulative monthly progress in 2008.

Motorcycle KSI casualties in Braintree have been above target since the baseline and have been increasing since 2005. At the end of 2008, however, there had been a total of 15 KSI casualties, a significant decrease of 17 casualties fewer than in 2007 and now 2 casualties under the target line (figure 9). After the 3rd quarter of 2009 there have been 24 motorcycle KSI casualties, 12 more than at the same stage of last year and 12 more than the target for this period (figure 10).

Drink Drive

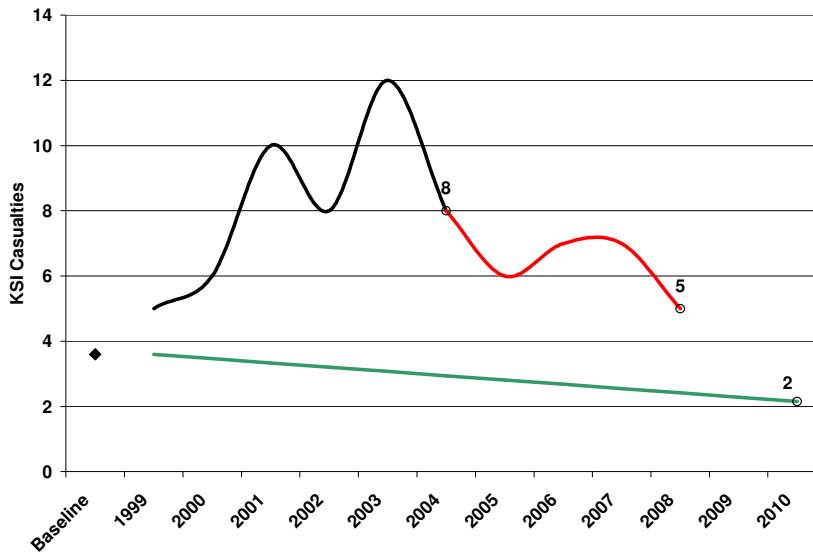


Figure 11. Progress towards 2010 – Braintree – Drink Drive

◆ 1994 - 1998 baseline average.
 — Number of KSI casualties per year since the 1994-1998 baseline average.
 — Number of KSI casualties per year since the establishment of the PSA in 2004.
 — Target. The 2010 target is a 40% reduction on the 1994-1998 baseline average. The line shows the level required to meet this

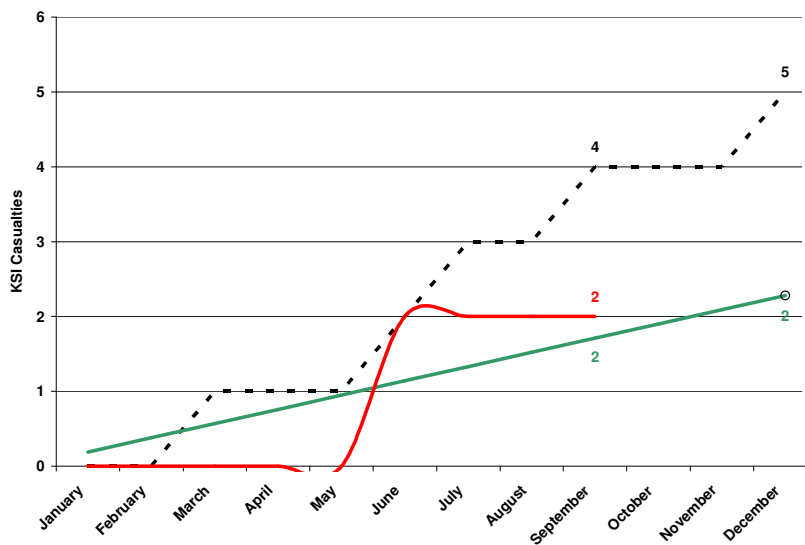


Figure 12. 2009 – Braintree – Drink drive

— Cumulative KSI casualties. This shows the number of KSI casualties in 2009.
 — Target. The target line shows the level required this year to be on target for 2010.
 --- Cumulative monthly progress in 2008.

Historically, drink drive KSI casualties in Braintree have been above target since the baseline. In 2008 there were 5 KSI casualties, 2 fewer than in 2007 but still 3 higher than the target (figure 11). After the 3rd quarter of 2009 there have been 2 drink drive KSI casualties, 2 less than at the same stage of last year but equal to the target for this period (figure 12).