

Basildon District KSI data to end of 3rd quarter 2009 (Provisional)

Total KSI casualties in Basildon

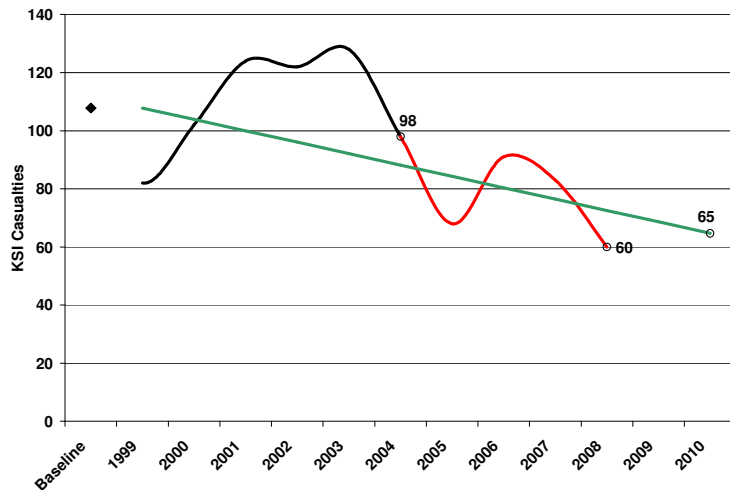


Figure 1. Progress towards 2010 - Basildon

- ◆ 1994 - 1998 baseline average.
- Number of KSI casualties per year since the 1994-1998 baseline average.
- Number of KSI casualties per year since the establishment of the PSA in 2004.
- Target. The 2010 target is a 40% reduction on the 1994-1998 baseline average. The line shows the level required to meet this

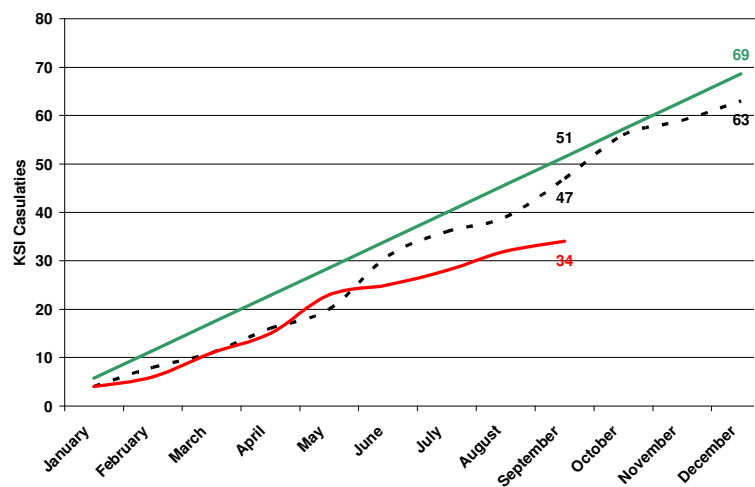


Figure 2. 2009 - Basildon

- Cumulative KSI casualties. This shows the number of KSI casualties in 2009.
- Target. The target line shows the level required this year to be on target for 2010.
- Cumulative monthly progress in 2008.

The number of KSI casualties in Basildon has been mostly above the target line since the baseline period. In 2008, however, there were 60 KSI casualties, 23 fewer than in 2007 and 13 fewer than the target line (figure 1). After the 3rd quarter of 2009 there have been 34 KSI casualties, 13 fewer than at the same stage last year and 17 less than the target for this period (figure 2).

Total CHILD KSI casualties in Basildon

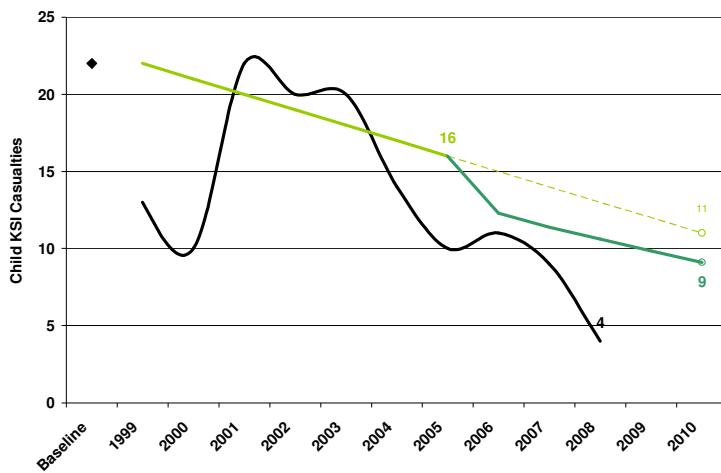


Figure 3. Progress towards 2010 - Basildon

◆ 1994 - 1998 baseline average.
 — Number of Child KSI casualties per year since the 1994-1998 baseline average.
 — 2010 Target. The 2010 target is a 50% reduction on the 1994-1998 baseline average. The line shows the level required to meet this target.
 — LTP2 Target. The LTP2 target was adjusted in 2005 to further reduce the DfT target.

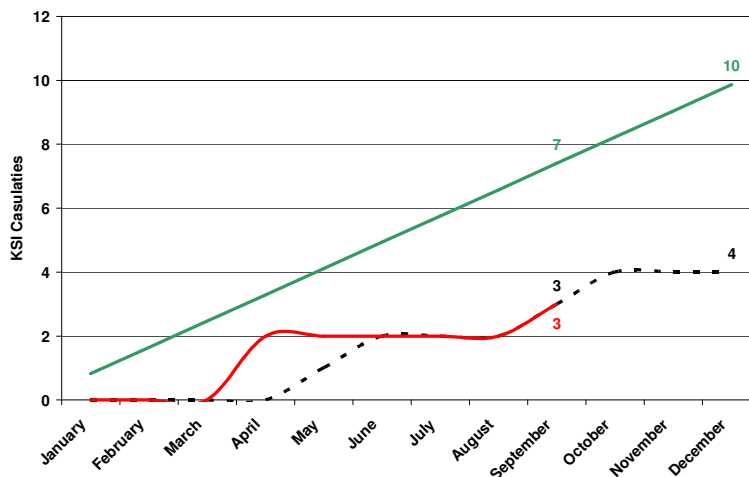


Figure 4. 2009 – Basildon

— Cumulative Child KSI casualties. This shows the number of KSI casualties in 2009.
 — LTP2 Target. The target line shows the level required this year to be on target for 2010.
 --- Cumulative monthly progress in 2008.

The number of Child KSI casualties in Basildon has been below the target line since 2004. In 2008 there were 4 child KSI casualties, 5 fewer than in 2007 and 7 lower than the adjusted target line (figure 3). After the 3rd quarter of 2009 there have been 3 Child KSI casualties, equal to the same stage of last year but 4 fewer than the target for this period (figure 4).

Comparison with other districts

Table 1. KSI casualties by District 2008

	KSI casualties - 2008						KSI per 100000 population
	Population	All	Drink Drive	Motorcycles	Speed-related	Young Drivers	
Basildon	168600	63	4	19	8	12	37.37
Braintree	139700	66	5	15	13	18	47.24
Brentwood	70900	39	0	7	4	12	55.01
Castle Point	88600	41	2	8	3	11	46.28
Chelmsford	162800	76	5	24	10	16	46.68
Colchester	170800	94	4	30	19	20	55.04
Epping	122900	113	7	27	22	21	91.94
Harlow	78100	16	1	4	1	3	20.49
Maldon	61700	37	4	7	6	9	59.97
Rochford	81100	22	4	6	3	7	27.13
Tendring	144600	80	6	19	7	13	55.33
Uttlesford	71400	59	2	12	14	13	82.63
New Essex	1361200	706	44	178	110	155	51.87

Source: 2006 mid-year population estimates, ONS Crown Copyright Reserved [from Nomis on 23 June 2008]

Table 2. KSI casualties by District 2009

	KSI casualties - 2009 (to end Q3 ONLY)						KSI per 100000 population
	Population	All	Drink Drive	Motorcycles	Speeding	Young Drivers	
Basildon	169,800	34	1	10	3	5	20.02
Braintree	140,900	56	2	24	4	7	39.74
Brentwood	71,600	38	2	13	1	8	53.07
Castle Point	89,200	18	0	8	2	0	20.18
Chelmsford	164,500	55	6	15	4	13	33.43
Colchester	175,500	60	5	14	13	13	34.19
Epping	123,300	60	2	19	10	12	48.66
Harlow	78,300	13	0	9	2	0	16.60
Maldon	62,400	20	3	6	3	5	32.05
Rochford	82,200	30	0	14	4	7	36.50
Tendring	146,200	60	6	18	5	16	41.04
Uttlesford	72,500	32	2	6	5	4	44.14
New Essex	1376400	476	29	156	56	90	34.58

Source: 2007 mid-year population estimates, ONS Crown Copyright Reserved [downloaded 24 July 2009]

Basildon was ranked 6th by number of KSI casualties in 2008 and 10th by KSI casualties per 100000 population (table 1). After the 3rd quarter of 2009 Basildon is ranked 7th by number of KSI casualties and 11th by KSI casualties per 100000 population (table 2).

Target groups

Young Drivers

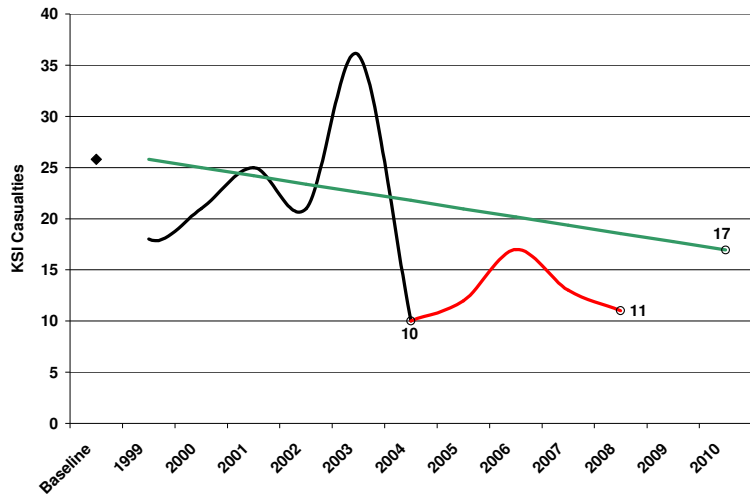


Figure 5. Progress towards 2010 – Basildon – Young Drivers

◆ 1994 - 1998 baseline average.
 — Number of KSI casualties per year since the 1994-1998 baseline average.

— Number of KSI casualties per year since the establishment of the PSA in 2004.

— Target. The 2010 target is a 40% reduction on the 1994-1998 baseline average. The line shows the level required to meet this

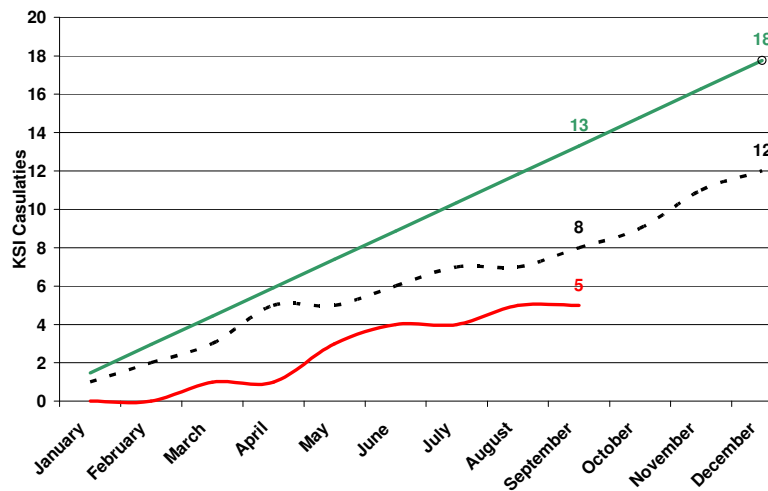


Figure 6. 2009 – Basildon – Young Drivers

— Cumulative KSI casualties. This shows the number of KSI casualties in 2009.

— Target. The target line shows the level required this year to be on target for 2010.

--- Cumulative monthly progress in 2008.

Young driver KSI casualties in Basildon have been below the target line since 2004. In 2008 there were 11 KSI casualties, 2 fewer than 2007 and 8 KSI casualties below the target line (figure 5). After the 3rd quarter of 2009 there have been 5 Young Driver KSI casualties, 3 fewer than at the same stage of last year and 8 less than the target for this period (figure 6).

Speed-related

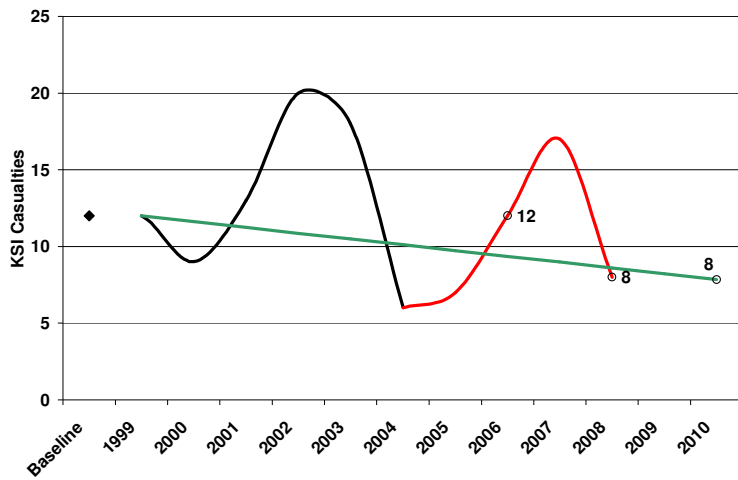


Figure 7. Progress towards 2010 Basildon – Speed-related

- ◆ 1994 - 1998 baseline average.
- Number of KSI casualties per year since the 1994-1998 baseline average.
- Number of KSI casualties per year since the establishment of the PSA in 2004.
- Target. The 2010 target is a 40% reduction on the 1994-1998 baseline average. The line shows the level required to meet this

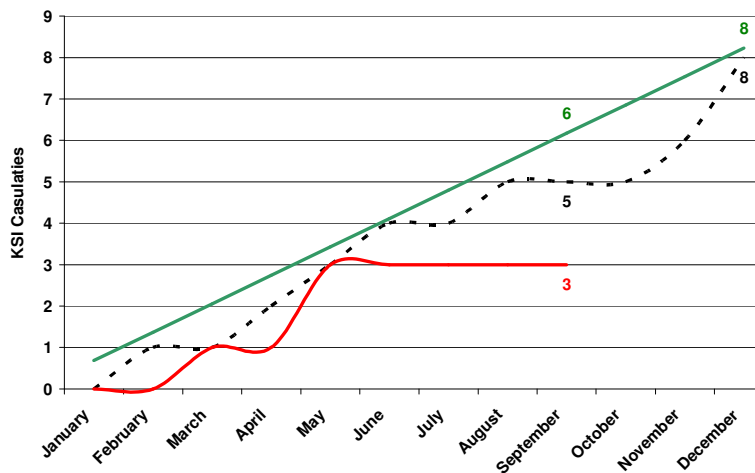


Figure 8. 2009 – Basildon – Speed-related

- Cumulative KSI casualties. This shows the number of KSI casualties in 2009.
- Target. The target line shows the level required this year to be on target for 2010.
- Cumulative monthly progress in 2008.

Speed related KSI casualties in Basildon had been increasing over recent years. In 2008, however, there were 8 KSI casualties, a decrease of 9 KSI casualties from 2007 and now 1 KSI casualty below the target line (figure 7). After the 3rd quarter of 2009 there have been 3 speed related KSI casualties, 2 fewer than at the same stage of last year and 3 less than the target for this period (figure 8).

Motorcyclists

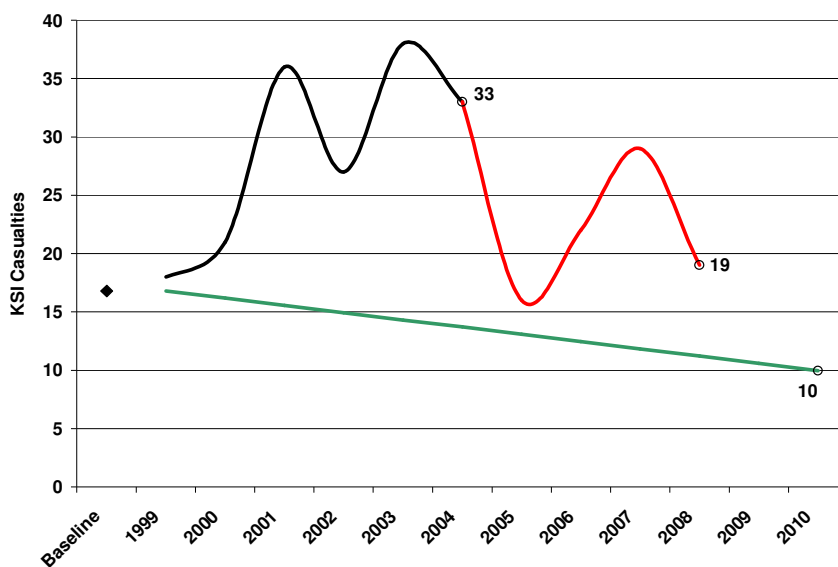


Figure 9. Progress towards 2010 – Basildon – Motorcycles

◆ 1994 - 1998 baseline average.
 — Number of KSI casualties per year since the 1994-1998 baseline average.

— Number of KSI casualties per year since the establishment of the PSA in 2004.

— Target. The 2010 target is a 40% reduction on the 1994-1998 baseline average. The line shows the level required to meet this

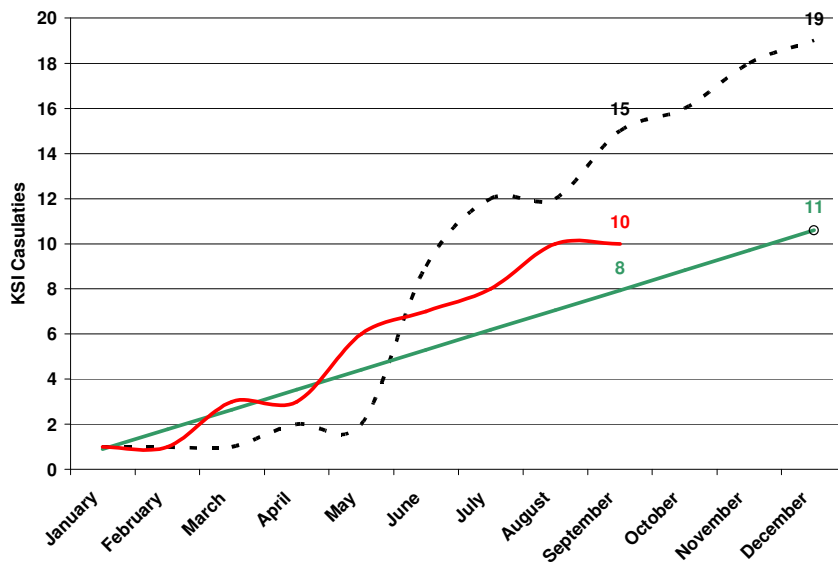


Figure 10. 2009 – Basildon – Motorcycles

— Cumulative KSI casualties. This shows the number of KSI casualties in 2009.

— Target. The target line shows the level required this year to be on target for 2010.

--- Cumulative monthly progress in 2008.

Motorcycle KSI casualties in Basildon have historically been above target since the baseline and increasing since 2005. In 2008, however, there were 19 KSI casualties, a decrease of 10 KSI casualties from 2007 but still 8 KSI casualties above the target line (figure 9). After the 3rd quarter of 2009 there have been 10 motorcycle KSI casualties, 5 fewer than at the same stage of last year but 2 more than the target for this period (figure 10).

Drink Drive

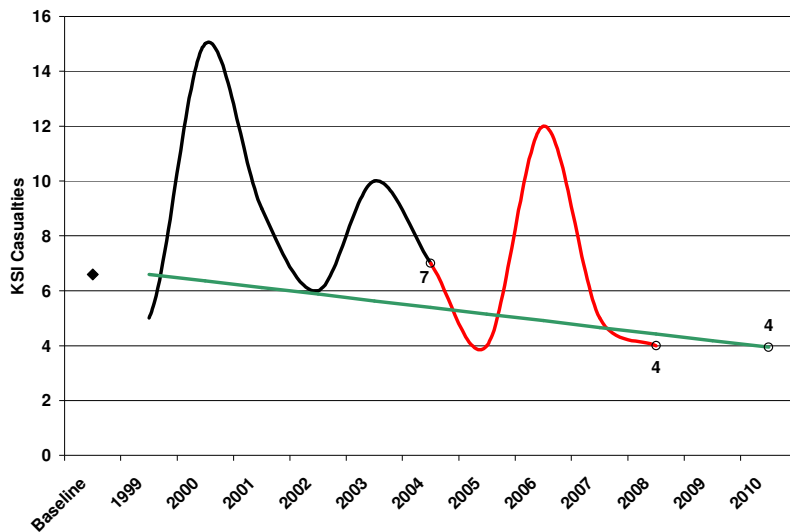


Figure 11. Progress towards 2010 – Basildon – Drink Drive

- ◆ 1994 - 1998 baseline average.
- Number of KSI casualties per year since the 1994-1998 baseline average.
- Number of KSI casualties per year since the establishment of the PSA in 2004.
- Target. The 2010 target is a 40% reduction on the 1994-1998 baseline average. The line shows the level required to meet this

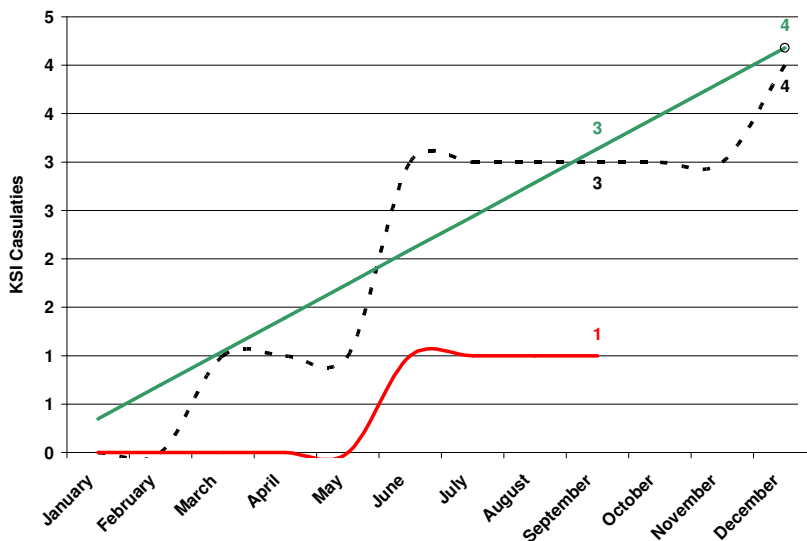


Figure 12. 2009 – Basildon – Drink drive

- Cumulative KSI casualties. This shows the number of KSI casualties in 2009.
- Target. The target line shows the level required this year to be on target for 2010.
- Cumulative monthly progress in 2008.

Historically, drink drive KSI casualties have rarely been below the baseline target in Basildon. In 2008 there were 4 KSI casualties, 1 fewer than 2007 and equal to the target for this year (figure 11). After the 3rd quarter of 2009 there has been 1 drink drive KSI casualty, 2 fewer than at the same stage of last year and 2 less than the target for this period (figure 12).